



FINOMIX[®]

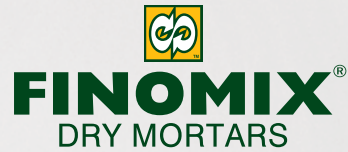
DRY MORTARS

building trusting relationships

PRODUCT CATALOGUE

2022





building trusting relationships

FINOBETON S.A. was founded in 1985, with the upmost vision to meet the needs of the construction industry for quality and reliable solutions in the fields of ready-mixed concrete, floor screeds, asphalt and quarry products. Its commitment for constant growth and innovation, combined with the know-how, the dedication to the excellent quality of the final product, and the high level of services offered, have substantially contributed to the expansion of the company's operations to other sectors (dry mortars, cutting and processing of natural and artificial stone, non-hazardous ECDW processing).

FINOMIX product line was launched in 2008, as the company put into full operation a dry mortars plant in its facilities in Chordaki, Chania. **FINOMIX** dry mortars are available in the Greek market and abroad through the distribution centers of the company in Chania, Herakleion (Crete) and Athens, and a dense network of up-to-date associates and points of sale.

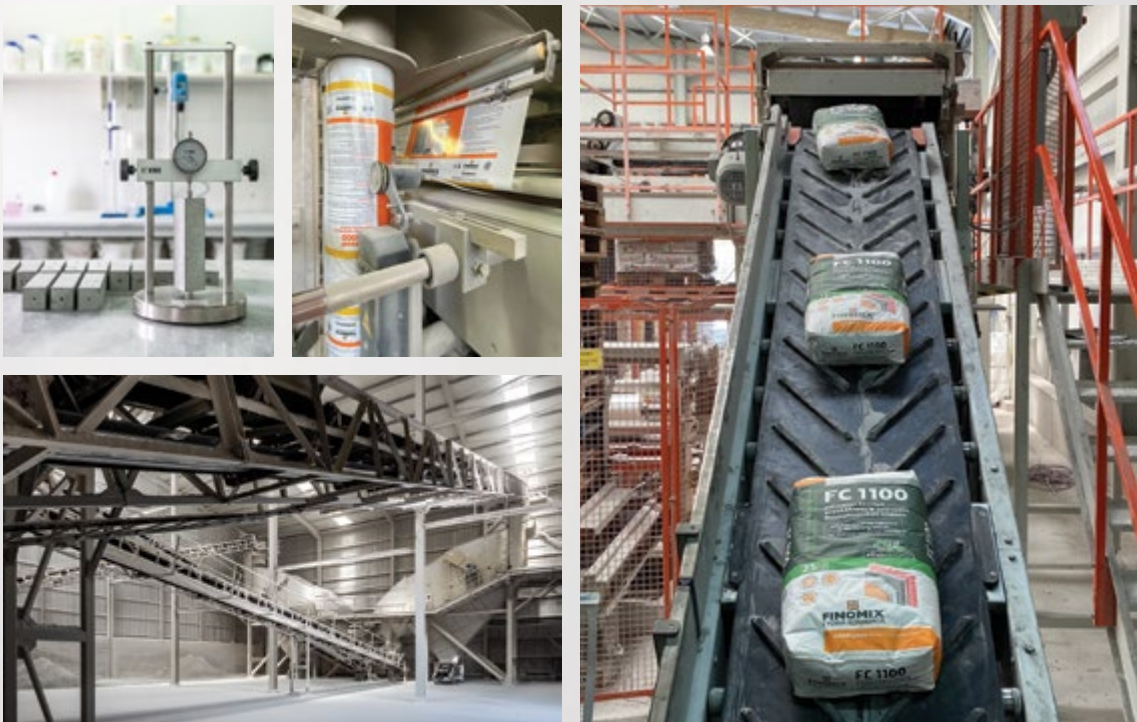
In the context of the continuous growth and development of the company, the expansion of the **FINOMIX** production facilities and a new 2,500m² logistics center will be completed within 2022. These investments will contribute to the excellent service of the company's sales network and the immediate coverage of any demand.

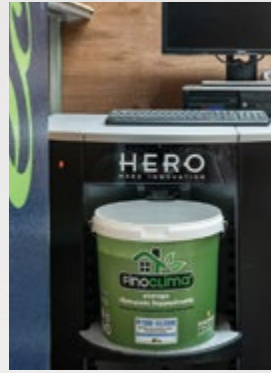




Technical support is provided by specialized technical staff in order to provide high quality services not only before but also after sales, as well as hands-on training on optimal product application and the proper operation of the application machines.

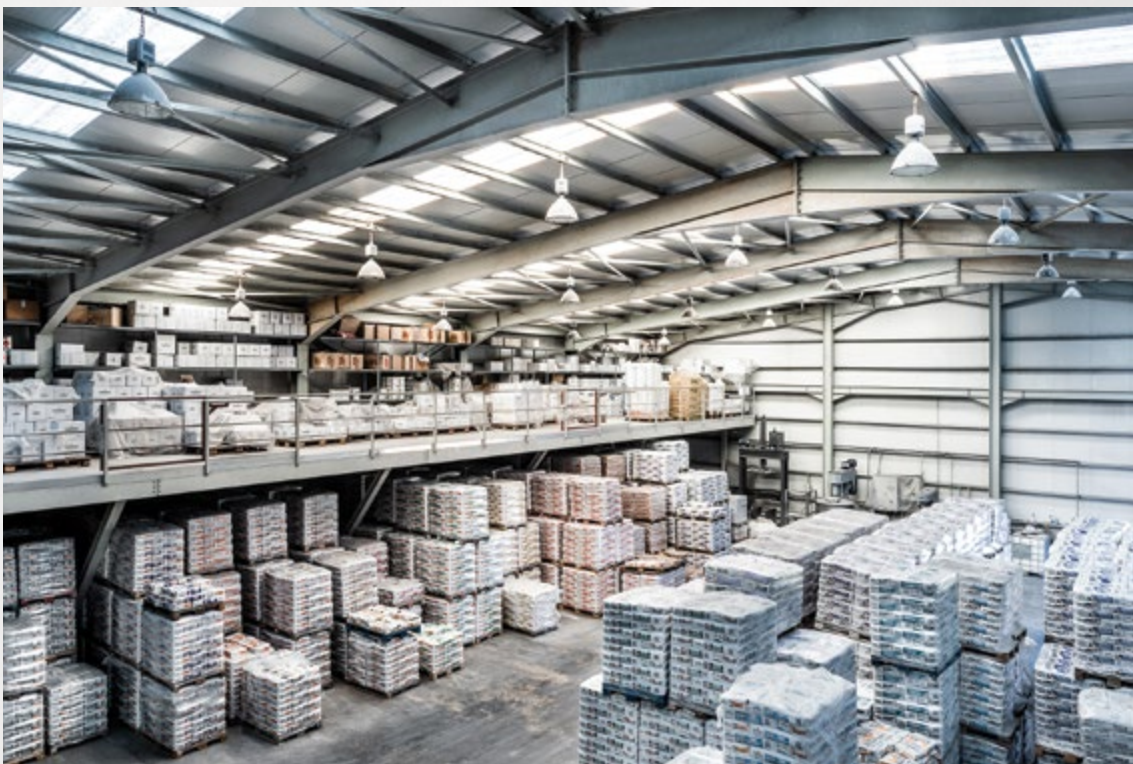
The **FINOMIX** Research and Development Department, staffed by experienced and fully trained scientific personnel, creates modern, high quality and easy-to-use products, which are integrated, reliable and timeless solutions in the field of construction materials. The company participates in collaborative research projects with distinguished universities in Greece and leading research centers that develop structural chemicals in Europe, aiming at the exchange of know-how towards the development of innovative solutions for the building industry.





FINOMIX products are CE marked according to the Regulation (EU) 305/2011 and the relevant European standards: EN 1504 (mortars for the repair and protection of concrete structures), EN 12004 (tile adhesives), EN 13888 (tile grouts), EN 13813 (floor screeds), ETAG 004 (external thermal insulation systems for facades of buildings), EN 998-1 (rendering and plastering mortars) and EN 998-2 (masonry mortars).

At the same time, a quality assurance system is applied according to the international standard ISO 9001:2015, for the development, production and distribution of **FINOMIX** products.





FINOMIX[®]

complete building systems



refractory mortars
for fireplaces & stoves

systems for underfloor
heating installations

systems for waterproofing,
tiling & joint sealing
of terraces & balconies

systems for plastering
of internal & external
surfaces

specialized mortars
for building glass blocks

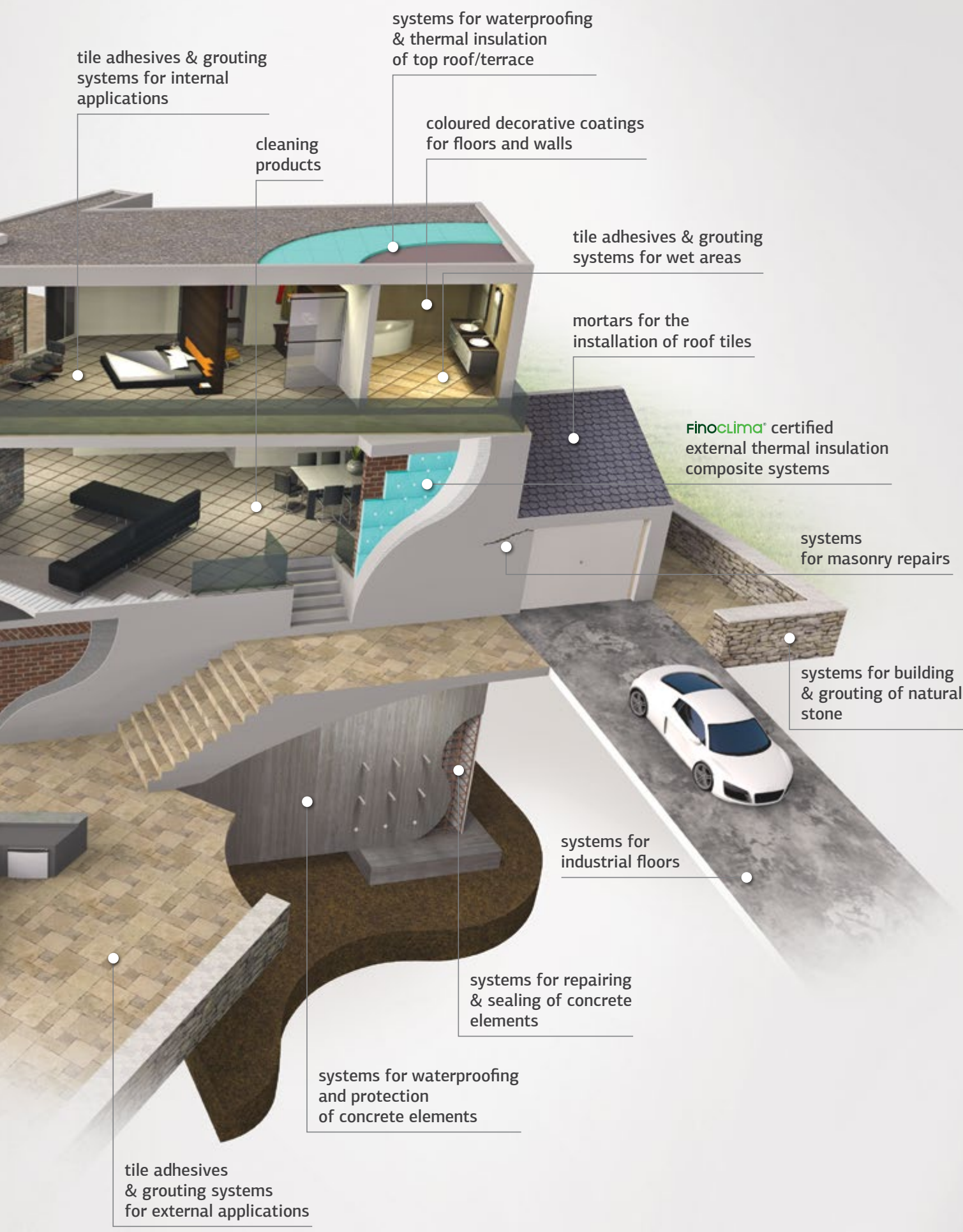
pool lining
systems

floor filling
& levelling
systems

specialized mortars
for building aerated
concrete blocks

coloured
decorative
plasters

masonry
mortars



tile adhesives & grouting systems for internal applications

systems for waterproofing & thermal insulation of top roof/terrace

cleaning products

coloured decorative coatings for floors and walls

tile adhesives & grouting systems for wet areas

mortars for the installation of roof tiles

Finoclima[®] certified external thermal insulation composite systems

systems for masonry repairs

systems for building & grouting of natural stone

systems for industrial floors

systems for repairing & sealing of concrete elements

systems for waterproofing and protection of concrete elements

tile adhesives & grouting systems for external applications

contents



1. repairing products & putties	9
1.1 repairing products	10
1.2 putties	14



2. waterproofing & sealing products ____	17
2.1 waterproofing & sealing products	18
2.2 auxiliary materials	22



3. tile adhesives & grouts	23
3.1 tile adhesives	28
3.2 special application adhesives	32
3.3 tile grouts	33
3.4 auxiliary materials	34



4. floor screeds	37
-------------------------------	----



5. Finoclima® external thermal insulation composite systems	41
5.1 Finoclima® products	42
5.2 auxiliary materials	47



6. decorative mortars	49
6.1 water repellent coloured plasters	50
6.2 microcement mortars	50
6.3 impregnation products & varnishes	52



7. building mortars & premixed renders _	55
7.1 building mortars	56
7.2 premixed renders	58
7.3 auxiliary materials	60



8. primers	61
-------------------------	----



9. mortar & concrete improvers	65
---	----



10. cleaners	69
10.1 Fresh (for domestic use)	70
10.2 ProClean (for professional use)	71

1. repairing products & putties



- repairing products
- putties



1.1 repairing products



RP 3000

Fast-setting fiber-reinforced one-coat repairing render



DESCRIPTION

Fast setting and drying, polymer-modified, fiber-reinforced, cement-based mortar, for repairs of render surfaces on old and new structures. It exhibits high mechanical strengths, strong adhesion to the substrate, minimal shrinkage and resistance to moisture. Classified as general purpose mortar (GP) type CS II, W1 rendering mortar according to the European standard EN 998-1.

APPLICATIONS

Ideal for quick repairs of render surfaces and damaged corners, as well as other minor repair works of the masonry surface. Also suitable for repairing several defects created during construction works, e.g. electrical, plumbing, framing works. Suitable for indoor and outdoor applications.

PACKAGING	ITEMS/BOX	ITEMS/PAL.
5kg plastic bag	4	144
25kg paper bag		60

CONSUMPTION

Approximately 12-14 kg/m² for a 1cm thick layer.

RP 4000

Fiber-reinforced high strength repairing mortar Class R4 (for layers up to 6cm thick)



DESCRIPTION

Cement-based, fiber-reinforced mortar, containing silica fume and polymers. It exhibits very high mechanical properties, modulus of elasticity similar to high-specifications concrete, very good dimensional stability and high bonding strength to concrete and steel. Due to its strong thixotropic properties, it can be applied in thicknesses up to 6cm in one layer. Classified as class CC R4 cementitious mortar for the repair of concrete structures according to European standard EN 1504-3.

APPLICATIONS

Suitable for repairing concrete elements of high quality due to its similar high modulus of elasticity. It can be applied by hand, with a trowel or a suitable piston or worm-screw type spraying machine on horizontal, vertical or overhead surfaces.

PACKAGING	ITEMS/BOX	ITEMS/PAL.
5kg plastic bag	4	144
25kg paper bag		60

CONSUMPTION

Approximately 18-19 kg/m² for a 1cm thick layer.

RP 4000 RAPID

Fast-setting fiber-reinforced high strength repairing mortar Class R3 (for layers up to 3cm thick)



DESCRIPTION

Fast-setting, fiber-reinforced, repairing mortar with fast strength development for highly demanding repairing works. It is thixotropic and can be applied in layers up to 3cm thick. Classified as CC R3 type mortar according to European standard EN 1504-03.

APPLICATIONS

Ideal for highly demanding quick repairs of concrete elements, anchoring, sealing of holes, forming of gutters, etc. It can be applied with a trowel on horizontal, vertical or overhead surfaces.

PACKAGING	ITEMS/BOX	ITEMS/PAL.
5kg plastic bag	4	144
25kg paper bag		60

CONSUMPTION

Approximately 16-17 kg/m² for a 1cm thick layer.

RP 4100

Fiber-reinforced fine-grained medium strength repairing mortar
Class R3

(for layers up to 5cm thick)



DESCRIPTION

Cement-based, fine-grained, fiber-reinforced mortar, containing silica fume and polymers.

Due to its high thixotropic properties, it can be applied in thicknesses up to 5cm in one layer, while it enables excellent finishing of the surface.

Classified as class CC R3 cementitious mortar for the repair of concrete structures according to European standard EN 1504-3.

APPLICATIONS

Suitable for repairing concrete elements of low to medium quality due to the similar low modulus of elasticity.

It can be applied by hand, with a trowel or a suitable piston or worm-screw type spraying machine on horizontal, vertical or overhead surfaces.

PACKAGING	ITEMS/PAL.
25kg paper bag	60

CONSUMPTION

Approximately 16-17 kg/m² for a 1cm thick layer.

RP 4200

Fiber-reinforced cementitious mortar for non-structural repairs of concrete and masonry
Class R2

(for layers up to 5cm thick)



DESCRIPTION

Polymer-modified, cement-based, fiber-reinforced mortar, containing silica fume.

Due to its high thixotropic properties, it can be applied in thicknesses up to 5cm in one layer, while it enables excellent finishing of the surface.

Classified as class PCC R2 cementitious mortar for non-structural repairs of concrete structures according to European standard EN 1504-3, as well as class GP CSIV, W2 general purpose rendering mortar according to European standard EN 998-1.

APPLICATIONS

Suitable for non-structural repairs of low-quality concrete elements due to the similar low modulus of elasticity, and also for the repair, pointing and rendering of masonry.

It can be applied by hand, with a trowel or a suitable piston or worm-screw type spraying machine on horizontal, vertical or overhead surfaces.

PACKAGING	ITEMS/PAL.
25kg paper bag	60

CONSUMPTION

Approximately 17-18 kg/m² for a 1cm thick layer.

RP 4300 STUCCOREP

Polymer-modified cementitious pore sealer and smoothing coat for concrete surfaces
Class R2

(for layers up to 5mm thick)



DESCRIPTION

Cement-based, fiber-reinforced mortar, modified with synthetic polymers, for minor repairs and pore sealing on concrete and rendered surfaces.

It exhibits high bonding strength to common substrates (concrete, render) and resistance to moisture.

It is applied in layers with maximum thickness of 5mm and enables excellent finishing of the surface.

Classified as class PCC R2 cementitious mortar for non-structural repairs of concrete structures according to European standard EN 1504-3.

APPLICATIONS

It is used as a pore sealer for concrete surfaces and also as a smoothing coat over concrete and rendered surfaces repairing hairline cracks, irregularities and other minor defects of the surface.

It is applied by hand, with a trowel or a spatula on horizontal, vertical or overhead surfaces.

Suitable for indoor and outdoor applications.

PACKAGING	ITEMS/PAL.
25kg paper bag	60

CONSUMPTION

Approximately 1.5 kg/m² for a 1mm thick layer.

RP 4010•MCI FERRO PROTECT

Migrating corrosion inhibitor



DESCRIPTION

Water-based solution with very high penetrating ability that inhibits corrosion of steel reinforcement of concrete structures.

It penetrates deeply in concrete structures creating a passivation layer (anodic inhibitor) around the steel reinforcement, thus protecting from chloride-induced corrosion and increasing lifespan. It fully complies to principle 11 (method 11.3) of the European standard EN 1504-9.

APPLICATIONS

It is applied preventively during concrete repair works, as well as for the protection of concrete structures that are exposed to corrosive environments (coastal areas, swimming pools, water reservoirs, fair-faced concrete, bridges, etc.).

PACKAGING	ITEMS/BOX	ITEMS/PAL.
1kg plastic container	14	504
5kg plastic container		128
20kg plastic container		39

CONSUMPTION

Approximately 0.5-1.0 kg/m².

RP 4020 CORROSION PROTECT

Cementitious anti-corrosive coating for concrete reinforcing elements & bonding bridge



DESCRIPTION

Cement-based mortar, modified with silica fume and polymers, for the protection of steel reinforcement against corrosion and also as a bonding bridge.

Classified as product for reinforcement corrosion protection according to European standard EN 1504-7.

APPLICATIONS

Used in repair works of reinforced concrete for protecting the corroded reinforcement or preventively as a barrier coating protecting the reinforcement when it is exposed (or will be exposed) to a corrosive environment.

Moreover, as a bonding bridge between old and new concrete or other repairing mortar.

PACKAGING	ITEMS/BOX	ITEMS/PAL.
1kg plastic container	12	432
5kg plastic container		96

CONSUMPTION

- As anti-corrosive coating: 0.10-0.15 kg/m of reinforcing steel (depending on the steel diameter) for a 1mm thick layer (application in 2 layers).
- As bonding bridge: 1.50-2.00 kg/m² for a 1mm thick layer.

RP 4030 RUST•CONVERTER HYBRID

Hybrid rust converter with parallel passivating & protective action



DESCRIPTION

RP 4030 RUST•CONVERTER HYBRID is composed of a hybrid acrylic-epoxy polymer that combines excellent rust converting properties and adhesion on metals, forming a film that blocks the migration of oxygen and water to the substrate.

It is applied directly on rusted surfaces converting them to a rust-inhibiting ion complex while at the same time it passivates the substrate providing protection from further corrosion.

APPLICATIONS

It is applied for rust conversion and protection on metal surfaces such as steel rebar of concrete elements, metal tools and machinery, and in marine applications.

PACKAGING	ITEMS/BOX	ITEMS/PAL.
0.25lt plastic container	48	
1lt plastic container	14	504

CONSUMPTION

Indicative consumption: approximately 0.2 lt/m².

Consumption depends on the type of application.

RP 4800 GUNITE

High strength, sprayed
cementitious mortar
for structural repairs
of concrete structures
Class R3



NEW

DESCRIPTION

Cement-based mortar containing silica fume, for the repair and structural strengthening of concrete structures, as well as the support of rock and excavation, using the dry or wet spraying process.

It is produced in two types: with maximum aggregate size 4mm and 8mm.

RP 4800 GUNITE meets the requirements of the Hellenic Technical Specification ELOT TS 1501-14-01-14-00 and the EFNARC - European Specification for Sprayed Concrete, for concrete class C32/40. Classified as class CC R3 cementitious mortar for the repair of concrete structures according to European standard EN 1504-3.

APPLICATIONS

Suitable for large-volume repair and structural strengthening of concrete structures, structural support of masonry and the support of rock and excavation.

PACKAGING	ITEMS/PAL.
30kg paper bag	48

CONSUMPTION

Indicatively, 20-22 kg/m² for a 1cm thick layer. Consumption is strongly affected by the surface and the application method.

GRP 4250

Non-shrink castable
cementitious grout
Class R4



DESCRIPTION

Cement-based, shrinkage-compensated, highly flowable grouting mortar.

It exhibits very high initial and final mechanical strengths, shrinkage compensation, no bleeding and segregation, high fluidity and low water permeability.

Classified as grouting mortar according to EN 1504-6 and as class CC R4 cementitious mortar for the repair of concrete structures according to European standard EN 1504-3.

APPLICATIONS

It is used wherever a high performance non-shrinking grout is necessary:

- Precision grouting of machinery.
- Grouting underneath structural steelwork.
- Repairs of concrete elements by casting using formworks.
- Anchoring of steel reinforcement.

PACKAGING	ITEMS/PAL.
25kg paper bag	60

CONSUMPTION

Approximately 2,000kg of dry material produce 1m³ of volume.

WATER•PLUG

Ultra fast-setting cementitious
water plugging mortar



DESCRIPTION

One-component, ultra fast setting and hardening, cement-based mortar, for sealing water leaks.

APPLICATIONS

Ideal for the instant sealing of water leaks under pressure in tanks, swimming pools, underground structures, underground tunnels, etc., for the sealing of cracks and holes, as well as for the sealing of rigid joints between walls and floors.

Also for fast repairing works of masonry or concrete prior to the application of brushable cementitious sealing mortars (HYDROSEAL HS 5000, HYDROSEAL HS 6000•1K, HYDROSEAL HS 7000 FIBRO•FLEX or HYDROSEAL ELASTIC).

PACKAGING	ITEMS/BOX	ITEMS/PAL.
5kg plastic bag	4	144
25kg paper bag		60

CONSUMPTION

Approximately 16-17 kg/m² for a 1cm thick layer.

DP•5350

Water repellent impregnation against capillary rising damp



DESCRIPTION

Ready-to-use, water-based, silicate emulsion, for the protection against capillary rising damp. It doesn't corrode the steel reinforcement of concrete.

APPLICATIONS

It is applied mainly by injection into masonry, or stone, brick or concrete structures, creating a horizontal, water repellent barrier against capillary rising damp. Alternatively, when applied on the surface of the masonry it creates a crystal waterproofing that protects from moisture ingress.

PACKAGING	ITEMS/PAL.
5kg plastic container	128
20kg plastic container	39

CONSUMPTION

It depends on the absorptivity of the substrate. Indicatively, for a normal absorbing masonry it is required approximately 15-16 kg/m² in cross section.

COLD•PATCH

Cold asphalt patch & pothole repair



DESCRIPTION

Ready-to-use cold asphalt, for repairing damages to the asphalt pavement. It exhibits increased elastic properties, excellent adhesion to the substrate without requiring a bonding layer and great resistance to weather stressing and time.

APPLICATIONS

It is used for repairing potholes and cracks on asphalt or concrete pavements. It is also used to restore asphalt pavements after core-sampling for quality testing purposes.

PACKAGING	ITEMS/PAL.
25kg plastic bag	50
25kg plastic container	36

CONSUMPTION

Approximately 20-22 kg/m² for a 1cm thick layer.

1.2 putties



FOAM•PUTTY

Acrylic foam-putty for quick patching of cracks and holes (up to 50mm deep)



DESCRIPTION

Ready-to-use, ultra lightweight acrylic putty, for quick patching of cracks and holes (up to 50mm deep). Ready to be painted after about 30 minutes. It exhibits great workability, increased adhesion strength and minimal shrinkage.

APPLICATIONS

Suitable for quick patches of cracks and holes on surfaces made of plaster, concrete, wood, gypsum boards, etc., indoors and outdoors.

PACKAGING	ITEMS/BOX	ITEMS/PAL.
0.25lt plastic container	24	384
1lt plastic container	12	192
4lt plastic container		48

CONSUMPTION

It depends on the application.

SC 01

Extra-fine graded polymer-modified spatula putty



DESCRIPTION

Extra fine-graded, polymer-modified, cementitious skim-coat mortar, for smoothing surfaces to be painted.
Classified as general purpose mortar (GP) type CS II, W0 according to European standard EN 998-1.

APPLICATIONS

Used for levelling and preparing surfaces to be painted, in cases where a perfectly smooth surface is required.
Suitable for interior and exterior applications, on plaster, gypsum or cement boards, and cement, instead of oil putties and similar materials.

PACKAGING	ITEMS/BOX	ITEMS/PAL.
4kg plastic bag	4	144
20kg paper bag		60

CONSUMPTION

Approximately 1.1 kg/m² for a 1mm thick layer.

SC 02

Polymer-modified levelling spatula putty



DESCRIPTION

Polymer-modified cementitious mortar, for smoothing and covering defects on surfaces to be painted.
Classified as general purpose mortar (GP) type CS II, W1 according to European standard EN 998-1.

APPLICATIONS

Used for levelling and preparing surfaces to be painted and for repairing small cracks.
Suitable for interior and exterior applications.

PACKAGING	ITEMS/BOX	ITEMS/PAL.
5kg plastic bag	4	144
25kg paper bag		60

CONSUMPTION

Approximately 1.4-1.5 kg/m² for a 1mm thick layer.

SC 03

Extra-fine graded polymer-modified repairing cement putty



DESCRIPTION

Extra fine-graded, polymer-modified, cementitious skim-coat mortar, for smoothing surfaces to be painted.
Classified as general purpose mortar (GP) type CS IV, W1 according to European standard EN 998-1.

APPLICATIONS

Used for the aesthetic repair of fair-faced concrete elements and the protection of reinforcement against corrosion by acting as a barrier to the penetration of moisture through the pores and imperfections that may exist.
Suitable for interior and exterior use.

PACKAGING	ITEMS/BOX	ITEMS/PAL.
5kg plastic bag	4	144
25kg paper bag		60

CONSUMPTION

Approximately 1.2 kg/m² for a 1mm thick layer.

SC 04

Polymer-modified cement putty for covering imperfections up to 20mm deep



DESCRIPTION

Polymer-modified cementitious mortar with increased covering properties, for smoothing surfaces to be painted.
Classified as general purpose mortar (GP) type CS III, W0 according to European standard EN 998-1.

APPLICATIONS

Suitable for filling and covering any imperfection on plaster, fair-faced concrete, masonry and other surfaces.
Application thickness up to 20mm/layer.
Suitable for interior and exterior use.

PACKAGING	ITEMS/BOX	ITEMS/PAL.
5kg plastic bag	4	144
25kg paper bag		60

CONSUMPTION

Approximately 1.5 kg/m² for a 1mm thick layer.

SPATULA•FINE

Extra-fine graded cementitious wall levelling compound



DESCRIPTION

Extra-fine graded, polymer-modified, cementitious skim-coat mortar, ideally used for levelling plastered/rendered or treated with coarse-graded spatula, surfaces. Classified as general purpose mortar (GP) type CS II, W0 according to European standard EN 998-1.

APPLICATIONS

Suitable for the skimming of surface to be painted. Applied on renders/plasters, cement and gypsum boards. Can be used for the repair of minor hairline-cracks on renders. Suitable for indoors and outdoors.

PACKAGING	ITEMS/PAL.
20kg paper bag	60

CONSUMPTION

1.0-1.2 kg/m² depending on the irregularities of the surface.

SPATULA COARSE

Coarse-graded cementitious wall levelling compound



DESCRIPTION

Coarse-graded, polymer-modified, cementitious skim-coat mortar, ideally used for levelling plastered/rendered surfaces. Classified as general purpose mortar (GP) type CS III, W1 according to European standard EN 998-1.

APPLICATIONS

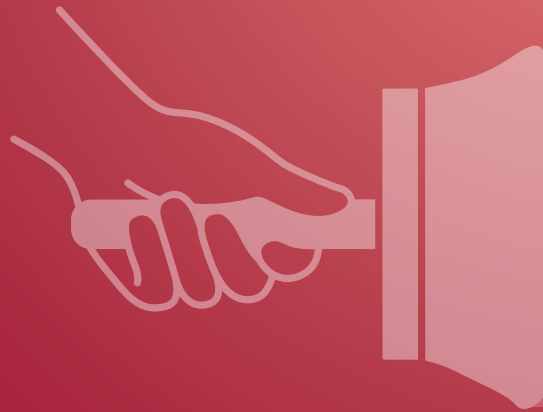
Suitable for the skimming of surface to be painted. Applied on renders/plasters, cement and gypsum boards. Can be used for the repair of minor hairline-cracks on renders. Suitable for indoors and outdoors.

PACKAGING	ITEMS/PAL.
25kg paper bag	60

CONSUMPTION

1.0-1.5 kg/m² depending on the irregularities of the surface.

2. waterproofing & sealing products



- waterproofing & sealing products
- auxiliary materials



2.1 waterproofing & sealing products



HYDROSEAL HS 5000

Brushable cementitious sealing slurry



DESCRIPTION

One-component, cement-based mortar, for waterproofing concrete structures and masonry against moisture and water ingress. It exhibits high adhesion on substrate and excellent waterproofing properties against positive and light negative hydrostatic pressures. Classified as coating mortar (C) for the protection of concrete structures according to European standard EN 1504-2.

APPLICATIONS

It is applied in two or more layers, for waterproofing of foundation walls, water reservoirs, underground walls, swimming pools, irrigation channels, lift-rooms, etc., on concrete elements and masonry (bricks, cement blocks, stone).

PACKAGING	ITEMS/BOX	ITEMS/PAL.
5kg plastic bag WHITE/GREY	4	144
25kg paper bag WHITE/GREY		60

CONSUMPTION

Approximately 1.5 kg/m² for a 1mm thick layer.

HYDROSEAL HS 6000-1K FLEX

Flexible one-component fiber-reinforced waterproofing cementitious slurry Class A3



DESCRIPTION

One-component, flexible, fiber-reinforced cementitious mortar, modified with polymer resins, for waterproofing concrete structures and masonry against moisture and water ingress. It exhibits high adhesion on substrate and excellent waterproofing properties against positive and light negative hydrostatic pressures. It exhibits high crack-bridging performance for cracks >0.5mm (class A3) at +23°C and >0.25mm (class A2) at -10°C. Classified as coating mortar (C) for the protection of concrete structures according to European standard EN 1504-2.

APPLICATIONS

It is applied in two or more layers, for waterproofing of substrates to be covered with ceramic tiles (swimming pools, baths, balconies, etc.), foundation walls to be backfilled in ground, basement walls and floors against negative hydrostatic pressure, for the protection of concrete structures against carbonation and water ingress through hairline cracks and pores.

PACKAGING	ITEMS/PAL.
20kg paper bag	60

CONSUMPTION

Approximately 1.2 kg/m² for a 1mm thick layer.

HYDROSEAL HS 6500 AQUA-PROTECT

Liquid fast-drying waterproofing membrane for non-exposed surfaces



DESCRIPTION

Ready-to-use, solvent-free, liquid elastomeric membrane, for the waterproofing of moist spaces that are going to be covered with ceramic tiles and natural stones. After drying, it forms a highly elastic seamless membrane, able to bridge cracks ≥0.75mm at -5°C, impermeable from water and vapours. It is classified as liquid-applied waterproofing product type DM 01 according to EN 14891.

APPLICATIONS

It is applied for seamless waterproofing of surfaces that are going to be covered with ceramic tiles, natural stones and mosaic tiles, in bathrooms, showers, balconies, terraces and damp areas in general. Suitable for interior and exterior applications.

PACKAGING	ITEMS/PAL.
5kg plastic container	96
15kg plastic container	44

CONSUMPTION

Approximately 1.0-1.3 kg/m² in two layers, depending on the substrate's type.

HYDROSEAL HS 7000 FIBRO-FLEX

Flexible fiber-reinforced
2-component cementitious
waterproofing mortar
Class A4



NEW

DESCRIPTION

Flexible, fiber-reinforced, 2-component cementitious mortar, for waterproofing of substrates against moisture or water under pressure (positive and negative pressures). It forms a flexible seamless membrane, impermeable to water, able to withstand contraction-expansions and vibrations of the substrate. It exhibits excellent crack-bridging performance for cracks >1.25mm (class A4) at +23°C and >0.5mm (class A3) at -10°C. Classified as coating mortar (C) for the protection of concrete structures according to European standard EN 1504-2.

APPLICATIONS

- It is used for:
- Waterproofing of concrete water tanks.
 - Waterproofing in baths, showers, swimming pools, roofs, balconies, etc., before the installation of ceramic tiles or other decorative layers.
 - Protection of concrete, masonry and render surfaces from the ingress of moisture and other corroding agents.
 - Protection of concrete surfaces exposed to saline environment.

PACKAGING	ITEMS/PAL.
33kg (25kg A + 8kg B) GREY	60(A) 60(B)

CONSUMPTION

Approximately 1.5-1.6 kg/m² for a 1mm thick layer.

HYDROSEAL ELASTIC

Flexible 2-component
brushable sealing slurry
Class A5



DESCRIPTION

Flexible, brushable, 2-component cementitious mortar, for seamless waterproofing of substrates against moisture or water under pressure (positive and negative pressures). It exhibits excellent crack-bridging performance for cracks >2.5mm (class A5) at +23°C and >1.25mm (class A4) at -10°C. Classified as coating mortar (C) for the protection of concrete structures according to European standard EN 1504-2.

APPLICATIONS

It is applied in two or more layers, for waterproofing of surfaces made of concrete, bricks, AAC blocks, cement-blocks, etc., as well as cement boards, metal, wood, etc. Ideal for waterproofing against water under pressure and substrates that have the tendency to appear (or already have) micro-cracks due to contraction-expansions or vibrations (terraces, balconies, inverted roofs, water tanks, swimming pools, etc.).

PACKAGING	ITEMS/PAL.
7kg (5kg A + 2kg B) WHITE	48 (A+B)
35kg (25kg A + 10kg B) WHITE/GREY	60(A) 60(B)

CONSUMPTION

Approximately 1.5 kg/m² for a 1mm thick layer.

HYDROFLEX COOL-ROOF

Flexible UV-resistant
2-component cementitious
waterproofing mortar
Class A5



NEW

DESCRIPTION

Flexible, 2-component cementitious mortar, for seamless waterproofing of exposed and non-exposed surfaces, protecting them against moisture and water under pressure (positive and negative pressures). It exhibits high UV resistance and excellent crack-bridging performance for cracks >2.5mm (class A5) at +23°C and >1.25mm (class A4) at -10°C. Classified as coating mortar (C) for the protection of concrete structures according to European standard EN 1504-2.

APPLICATIONS

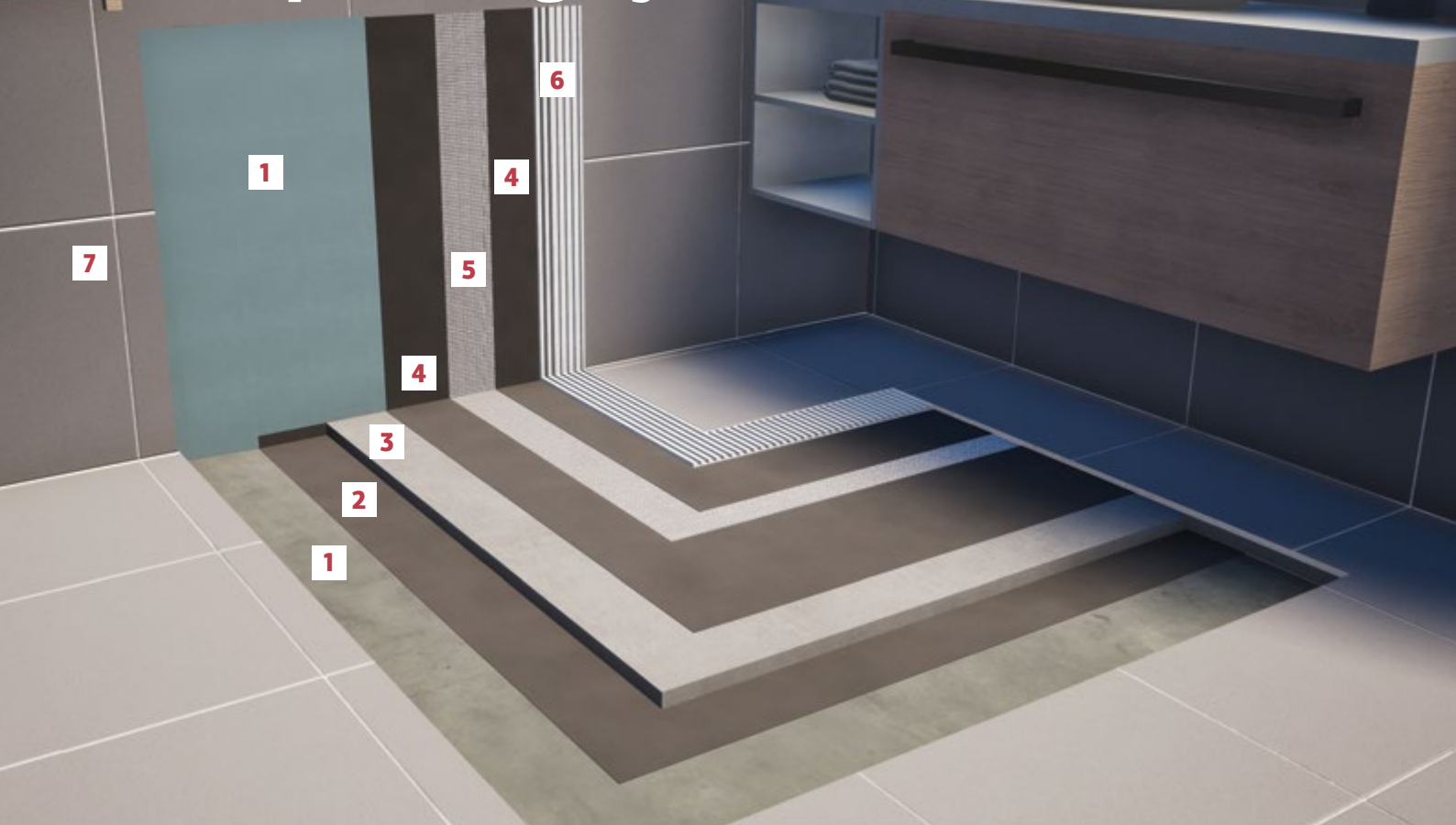
It is applied in two or more layers, for the waterproofing of roofs, and as a cool roof-coating since it exhibits high solar reflectance, reducing the cooling costs during the summer months. It is used for waterproofing of surfaces made of concrete, bricks, AAC blocks, cement-blocks, etc., as well as cement boards, metal, wood, etc. Ideal for waterproofing against water under pressure and substrates that have the tendency to appear (or already have) micro-cracks due to contraction-expansions or vibrations (terraces, balconies, inverted roofs, water tanks, swimming pools, etc.).

PACKAGING	ITEMS/PAL.
35kg (25kg A + 10kg B) WHITE	60(A) 60(B)

CONSUMPTION

Approximately 1.3-1.4 kg/m² for a 1mm thick layer.

waterproofing systems materials



1 SUBSTRATE

Concrete/gypsum board

2 HYDROSEAL HS 6000•1K FLEX

Flexible one-component fiber-reinforced waterproofing cementitious slurry
Class A3

HYDROSEAL HS 6500 AQUA•PROTECT

Liquid fast-drying waterproofing membrane for non-exposed surfaces

HYDROSEAL HS 7000 FIBRO•FLEX

Flexible fiber-reinforced 2-component cementitious waterproofing mortar - Class A4

HYDROSEAL ELASTIC

Flexible 2-component brushable sealing slurry
Class A5

3 FS 100

Fiber-reinforced cementitious levelling floor screed (for layers up to 10cm thick)

FS 600 FAST•SCREED

Fast-curing low-shrinkage cement mortar for the construction and levelling of floors (for 2-6cm thick layers)

4 HYDROSEAL HS 6000•1K FLEX

Flexible one-component fiber-reinforced waterproofing cementitious slurry
Class A3

HYDROSEAL HS 6500 AQUA•PROTECT

Liquid fast-drying waterproofing membrane for non-exposed surfaces

HYDROSEAL HS 7000 FIBRO•FLEX

Flexible fiber-reinforced 2-component cementitious waterproofing mortar - Class A4

HYDROSEAL ELASTIC

Flexible 2-component brushable sealing slurry
Class A5

5 YALOΠΛEΓMA MONΩΣEΩN

Flexible alkali resistant fiberglass mesh 60gr/m²

6 KP 250 SPECIAL

High performance polymer-modified tile adhesive
Type C2 TE

KP 300 FLEXY

Elastic polymer-modified tile adhesive
Type C2 TE S1

KP 500 ELASTIC

High performance elastic polymer-modified tile adhesive
Type C2 TE S1

KP 550 GEL ULTRA S1

High performance GEL-type deformable cementitious adhesive
Type C2 TE S1

7 GROUT 0-3

Acrylic water repellent tile grout - Type CG2

GROUT 3-10

Acrylic water repellent tile grout - Type CG2

EPOXY GROUT 2-12

2-component epoxy grout - Type RG

HYDROFLEX HYBRID•PU

Hybrid-polyurethane
elastomeric waterproofing
roof-coating



DESCRIPTION

High quality, hybrid elastomeric coating, composed out of special polyurethane and acrylic polymers. Fast curing, forming a totally watertight, highly elastic and durable membrane without seams or joints. The waterproofing membrane is resistant to UV radiation, with high solar-reflectance properties and highly resistant to stagnant water.

Classified as coating (C) for the protection of concrete structures according to European standard EN 1504-2.

APPLICATIONS

Ideal for the waterproofing of roofs, over old waterproofing membranes (bitumen sheets, polyurethane, acrylic), as well as difficult areas like corners, edges and joints between adjacent different materials.

Also suitable for local sealing of cracks on flat roofs. It exhibits high solar reflectance which makes it capable to be applied as cool roof-coating.

PACKAGING	ITEMS/PAL.
5kg plastic container	96
15kg plastic container	44

CONSUMPTION

Approximately 0.5-1.0 kg/m² per layer, depending on the method of application and the roughness of the substrate.

HYDROFLEX ACRYL

Acrylic brushable elastomeric
roof-coating



DESCRIPTION

Brushable elastomeric roof-coating, based on acrylic polymers. After it is applied, it forms an elastic membrane without joints, highly resistant to UV radiation and with high solar-reflectance properties. Contains no organic solvents.

Classified as coating (C) for the protection of concrete structures according to European standard EN 1504-2.

APPLICATIONS

Used for waterproofing roofs, as well as difficult points such as corners, edges, joints between different materials or for sealing cracks in roofs.

Also suitable as cool roof-coating due to its high solar reflectance.

PACKAGING	ITEMS/PAL.
5kg plastic container	96
15kg plastic container	44

CONSUMPTION

Approximately 1.0-1.5 kg/m² in two layers, depending on the substrate's type.

HYDROFLEX•PU

Elastic polyurethane
waterproofing membrane



DESCRIPTION

Elastic, polyurethane, brushable, one-component waterproofing membrane. After it is applied, it forms an elastic, durable membrane without joints, with high elasticity and resistant to stagnant water, frost and heat (non-softening), as well as corrosive agents (sea water, cleaning agents, household chemicals, oil, etc.).

Classified as coating (C) for the protection of concrete structures according to European standard EN 1504-2. Dilute 5% with SOLVENT•255.

APPLICATIONS

Ideal for waterproofing of terraces and roofs, under tiles in baths, balconies and swimming pools, waterproofing under thermal insulation boards on flat roofs and over old waterproofing layers (bitumen sheets, EPDM, acrylic, etc.).

PACKAGING	ITEMS/PAL.
25kg metal container	33

CONSUMPTION

Approximately 1.5-2.0 kg/m² in two or three layers.

SOLVENT•255

Solvent for polyurethane waterproofing membranes



DESCRIPTION

Powerful solvent for polyurethane waterproofing membranes applied with roller, brush or spray.

APPLICATIONS

It is used for the dilution of HYDROFLEX•PU, as well as to clean tools after use and the residues of polyurethane materials.

PACKAGING	ITEMS/PAL.
4kg metal container	115
16kg metal container	33

CONSUMPTION

5% dilution of HYDROFLEX•PU.

PU•FIX

Elastomeric thixotropic polyurethane sealant



DESCRIPTION

Elastomeric, one-component, polyurethane sealant, with increased thixotropic behaviour. Available in white and grey.

APPLICATIONS

Used as sealant and adhesive of vertical and horizontal joints between similar and dissimilar materials in construction and technical works, prefab, naval and industrial applications, in indoor and outdoor areas. Exhibits strong adhesion on all construction materials such as concrete, ceramics, glass, wood, metal plate, aluminium, steel, etc.

PACKAGING	ITEMS/BOX
600ml roll	15

CONSUMPTION

Indicatively:

- For 10x10mm joints: 310ml / 3m of joint.
- For 5x5mm joint: 310ml / 12m of joint.

2.2 auxiliary materials



DIMPLED MEMBRANE (HDPE)

Dimpled membrane of high-density polyethylene (HDPE) for drainage and protection around basements. Fulfills the requirements of the European standard EN 13967. Weight: 400gr/m².

WEIGHT	DIMPLE HEIGHT	DIMENSIONS
400 gr/m ²	8mm	2x20m (40m ²)



FIBERGLASS MESH FOR INSULATIONS

Flexible alkali resistant fiberglass mesh 60gr/m², suitable for the reinforcement of flexible cementitious waterproofing layers and acrylic, polyurethane or asphalt based elastomers.

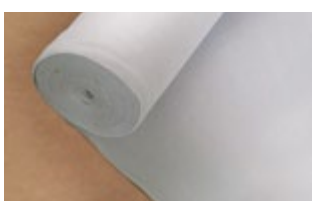
WEIGHT	SQUARE OPENING	COLOUR	DIMENSIONS
60 gr/m ²	2x2mm	White	1x50m (50m ²)



POLYESTER REINFORCING FABRIC

Polyester fleece for the reinforcement of hybrid, polyurethane or acrylic waterproofing membranes. Weight: 50gr/m².

WEIGHT	THICKNESS	COLOUR	DIMENSIONS
50 gr/m ²	0.6mm	White	1x50m (50m ²)



POLYESTER NON-WOVEN FABRIC

Polyester, non-woven fabric with excellent mechanical and hydraulic characteristics. Used as filter, reinforcement or separating layer in infrastructures, draining, anti-corrosion, building and railway projects.

WEIGHT	DIMENSIONS
120 gr/m ²	2x100m (200m ²)
150 gr/m ²	2x50m (100m ²)

3. tile adhesives & grouts



- tile adhesives
- special application adhesives
- grouts
- auxiliary materials



european standards guide

EUROPEAN STANDARD EN 12004-1 TILE ADHESIVES				
ADHESIVE TYPE	SYMBOL GUIDE	PROPERTY	CHECK METHOD	MINIMUM REQUIREMENTS
C1	CEMENTITIOUS TILE ADHESIVE	adhesion strength	EN 12004-2, 8.3 after 28 days under normal conditions (23°C, 50±5% RH, U _{air} ≤0.2m/s)	≥ 0,5 N/mm ²
			EN 12004-2, 8.3 after thermal ageing at 70°C for 14 days	≥ 0,5 N/mm ²
			EN 12004-2, 8.3 after water immersion for 21 days	≥ 0,5 N/mm ²
		open time	EN 12004-2, 8.1 after 25 freeze-thaw cycles	≥ 0,5 N/mm ²
		open time	EN 12004-2, 8.1	≥ 20 min
C2	ENHANCED CEMENTITIOUS TILE ADHESIVE	adhesion strength	EN 12004-2, 8.3 after 28 days under normal conditions (23°C, 50±5% RH, U _{air} ≤0.2m/s)	≥ 1,0 N/mm ²
			EN 12004-2, 8.3 after thermal ageing at 70°C for 14 days	≥ 1,0 N/mm ²
			EN 12004-2, 8.3 after water immersion for 21 days	≥ 1,0 N/mm ²
		open time	EN 12004-2, 8.3 after 25 freeze-thaw cycles	≥ 1,0 N/mm ²
		open time	EN 12004-2, 8.1	≥ 20 min
D1	DISPERSION ADHESIVE BASED ON LIQUID POLYMERS	adhesion strength	EN 12004-2, 8.3 after 28 days under normal conditions (23°C, 50±5% RH, U _{air} ≤0.2m/s)	≥ 1,0 N/mm ²
		shear strength	EN 12004-2, 8.4 after thermal ageing at 70°C for 14 days	≥ 1,0 N/mm ²
			EN 12004-2, 8.4 after water immersion for 14 days	-
		open time	EN 12004-2, 8.4 after stress to high temperatures	-
		open time	EN 12004-2, 8.1	≥ 20 min
D2	ENHANCED DISPERSION ADHESIVE BASED ON LIQUID POLYMERS	adhesion strength	EN 12004-2, 8.3 after 28 days under normal conditions (23°C, 50±5% RH, U _{air} ≤0.2m/s)	≥ 1,0 N/mm ²
		shear strength	EN 12004-2, 8.4 after thermal ageing at 70°C for 14 days	≥ 1,0 N/mm ²
			EN 12004-2, 8.4 after water immersion for 14 days	≥ 0,5 N/mm ²
		open time	EN 12004-2, 8.4 after stress to high temperatures	≥ 1,0 N/mm ²
		open time	EN 12004-2, 8.1	≥ 20 min
R1	REACTIVE RESINS ADHESIVE	adhesion strength	EN 12004-2, 8.3 after 28 days under normal conditions (23°C, 50±5% RH, U _{air} ≤0.2m/s)	≥ 2,0 N/mm ²
		shear strength	EN 12004, 8.5 after water immersion for 14 days	≥ 2,0 N/mm ²
			EN 12004, 8.5 after thermal shock	-
		open time	EN 12004-2, 8.1	≥ 20 min
R2	ENHANCED REACTIVE RESINS ADHESIVE	adhesion strength	EN 12004-2, 8.3 after 28 days under normal conditions (23°C, 50±5% RH, U _{air} ≤0.2m/s)	≥ 2,0 N/mm ²
		shear strength	EN 12004, 8.5 after water immersion for 14 days	≥ 2,0 N/mm ²
			EN 12004, 8.5 after thermal shock	≥ 2,0 N/mm ²
		open time	EN 12004-2, 8.1	≥ 20 min

ADDITIONAL CHARACTERISTICS				
ADHESIVE TYPE	SYMBOL GUIDE	PROPERTY	CHECK METHOD	MINIMUM REQUIREMENTS
T	THIXOTROPIC ADHESIVE (ZERO VERTICAL SLIP)	vertical slip	EN 12004-2, 8.2	≤ 0.5 mm
E	ADHESIVE WITH PROLONGED OPEN TIME	open time	EN 12004-2, 8.1	≥ 30 min
F	FAST-SETTING ADHESIVE	open time	EN 12004-2, 8.1	≥ 10 min
		adhesion strength after 24 hours	EN 12004-2, 8.3	≥ 0.5 N/mm ²

EUROPEAN STANDARD EN 12002 ELASTIC TILE ADHESIVES				
ADHESIVE TYPE	SYMBOL GUIDE	PROPERTY	CHECK METHOD	MINIMUM REQUIREMENTS
S1	ELASTIC ADHESIVE	lateral deformability S	EN 12004-2, 8.6	2.5 mm ≤ S < 5 mm
S2	HIGHLY ELASTIC ADHESIVE			S ≥ 5 mm

FINOMIX[®] adhesive tiles comformity with european standards

ADHESIVE NAME	CLASS	DESCRIPTION
KP 80	C1	Cementitious tile adhesive for absorbent tiles and common substrates. <i>for interior and exterior use</i>
KP 100	C1 T	Cementitious tile adhesive with zero vertical slip, for absorbent tiles and common substrates. <i>for interior and exterior use</i>
KP 200	C2 T	Enhanced cementitious tile adhesive with zero vertical slip, for non-absorbent tiles and common substrates. <i>for interior and exterior use</i>
KP 220	C2 E	Enhanced cementitious tile adhesive with extended open time of adhesion, for non-absorbent tiles and common substrates. <i>for interior and exterior use</i>
KP 250	C2 TE	Enhanced cementitious tile adhesive with zero vertical slip and extended open time of adhesion, for non-absorbent tiles and common substrates. <i>for interior and exterior use</i>
KP 300	C2 TE S1	Enhanced cementitious tile adhesive with zero vertical slip and extended open time of adhesion, for non-absorbent tiles. <i>elastic - for interior and exterior use</i>
KP 400	C2 TE	Enhanced cementitious tile adhesive with zero vertical slip and extended open time of adhesion, for non-absorbent tiles and common substrates. <i>for interior and exterior use</i>
KP 450	C2 FT	Fast-setting, enhanced cementitious tile adhesive with zero vertical slip, for non-absorbent tiles and common substrates. <i>for interior and exterior use</i>
KP 500	C2 TE S1	Enhanced cementitious tile adhesive with zero vertical slip and extended open time of adhesion, for non-absorbent tiles. <i>elastic - for interior and exterior use</i>
KP 550 GEL	C2 TE S1	Enhanced cementitious tile adhesive with zero vertical slip and extended open time of adhesion, for non-absorbent tiles. <i>elastic - for interior and exterior use</i>
KP 600	C2 TE S2	Enhanced cementitious tile adhesive with zero vertical slip and extended open time of adhesion, for non-absorbent tiles. <i>highly elastic - for interior and exterior use</i>

table of applications for FINOMIX® tile

ADHESIVE NAME	KP 80	KP 100	KP 200	KP 220	KP 250
ADHESIVE TYPE	C1	C1 T	C2 T	C2 E	C2 TE
BUILDING MATERIAL					
ceramic tiles (absorbent)					
granite tiles					
medium dimensions tiles (up to 3600cm ²)			▲		
large dimensions tiles (up to 1.20x1.20m)					
very large dimensions tiles (indicatively: 3.00x1.60m)					
marble					
natural stone					
artificial stone					
ceramic mosaics					
glass mosaics					▲
AAC blocks					
glass blocks					
fire bricks					
INTERIOR FLOOR					
cement screeds					
lightweight concrete	●	●	●	●	●
mosaic			● ▲	● ▲	●
old tile layings				● ▲	● ▲
underfloor heating					▲
wood					
metal					
INTERIOR WALL					
cement-based plasters					
gypsum plasters		●	●		●
cement board			● ▲		● ▲
gypsum board			● ▲		● ▲
AAC blocks		●	●		●
BATHROOM					
cement screeds					
plaster					
gypsum board			● ▲		● ▲
BALCONY - TERRACE					
cementitious surface			▲	▲	
lightweight concrete			● ▲	● ▲	● ▲
FACADES					
plaster			▲	▲	
cement board					● ▲
AAC blocks			● ▲	● ▲	●
SWIMMING POOL					
cementitious surface					

Recommended application



Alternative application



adhesives & special application adhesives

KP 300 C2 TE S1	KP 400 C2 TE	KP 450 C2 FT	KP 500 C2 TE S1	KP 550 GEL C2 TE S1	KP 600 C2 TE S2	KF 530	PORO 510	GL 520
Green	Green	Green	Green	Green	Green	White	White	White
Green	Green	Green	Green	Green	Green	White	White	White
Green	White	Green	Green	Green	Green	White	White	White
White	White	White	White	White	Green	White	White	White
Green	Green	White	Green	Green	Green	White	White	White
Green	Green	White	Green	Green	Green	White	White	White
Green	Green	White	Green	Green	Green	White	White	White
Green	White	Green	Green	Green	Green	White	White	White
Green	Yellow	White	Green	Green	Green	White	White	White
White	White	White	White	White	White	White	Green	White
White	White	White	White	White	White	White	White	Green
White	White	White	White	White	White	Green	White	White
White	White	White	White	White	White	White	White	White
Green	Green	Green	Green	Green	Green	White	White	White
●	●	●	●	●	●	White	White	White
●	●	●	●	●	●	White	White	White
●	●	●	●	●	●	White	White	White
White	▲	White	Green	Green	Green	White	White	White
● ▲	● ▲	● ▲	●	●	●	White	White	White
White	White	White	● ▲	● ▲	●	White	White	White
White	White	White	White	White	White	White	White	White
Green	Green	Green	Green	Green	Green	White	White	White
●	●	●	●	●	●	White	White	White
●	●	●	●	●	●	White	White	White
●	●	●	●	●	●	White	White	White
●	●	●	●	●	●	White	White	White
White	White	White	White	White	White	White	White	White
Green	Green	Green	Green	Green	Green	White	White	White
●	●	●	●	●	●	White	White	White
●	●	●	●	●	●	White	White	White
White	White	White	White	White	White	White	White	White
Green	White	White	Green	Green	Green	White	White	White

Enhancement with FINOFLEX emulsion according to the instructions ▲

Substrate preparation with PRIMER FP•31 or FINO•CONTACT ●

3.1 tile adhesives



KP 80 STANDARD

Polymer-modified tile adhesive
Type C1



DESCRIPTION

Cement-based, polymer-modified tile adhesive. It exhibits high adhesion strength and resistance to moisture. Classified as **C1** type cementitious adhesive according to European standard EN 12004-1.

APPLICATIONS

Suitable for the installation of ceramic tiles, but also for minor repair works from painters and electricians. It is applied on floors, on common substrates such as concrete, floor screeds, etc. Suitable for indoor and outdoor applications.

PACKAGING	ITEMS/PAL.
25kg paper bag	60

CONSUMPTION

Approximately 2-5 kg/m² depending on the substrate's roughness and the dimensions of the tiles.

KP 100 ACRYLIC

Acrylic tile adhesive
Type C1 T



DESCRIPTION

Cement-based, polymer-modified tile adhesive. It exhibits high adhesion strength, no vertical slip and resistance to moisture. Classified as **C1 T** type cementitious adhesive according to European standard EN 12004-1.

APPLICATIONS

Suitable for the installation of ceramic tiles, but also for minor repair works from painters and electricians. It is applied on walls and floors, on common substrates such as concrete, floor screeds, masonry, renders, etc. Suitable for indoor and outdoor applications.

PACKAGING	ITEMS/BOX	ITEMS/PAL.
5kg plastic bag	4	144
25kg paper bag		60

CONSUMPTION

Approximately 2-5 kg/m² depending on the substrate's roughness and the dimensions of the tiles.

KP 200 SUPER ACRYLIC

High performance acrylic tile adhesive
Type C2 T



DESCRIPTION

High performance, polymer-modified, cement-based tile adhesive. It exhibits high adhesion strength, no vertical slip and resistance to moisture. Classified as **C2 T** type cementitious adhesive according to European standard EN 12004-1.

APPLICATIONS

Suitable for the installation of absorbent (ceramic) tiles of any type and size, natural stones, as well as non-absorbent tiles (gres porcelanato, cotto, etc.) of small and medium sizes. It is applied on walls and floors, on common substrates like concrete, floor screeds, masonry, renders, etc. Suitable for indoor and outdoor applications.

PACKAGING	ITEMS/PAL.
25kg paper bag	60

CONSUMPTION

Approximately 2-5 kg/m² depending on the substrate's roughness and the dimensions of the tiles.

KP 220 EXTRA

High performance
polymer-modified
tile adhesive
Type C2 E



DESCRIPTION

High performance, polymer-modified, cement-based tile adhesive. It exhibits high adhesion strength, extended open time and resistance to moisture. Classified as **C2 E** type cementitious adhesive according to European standard EN 12004-1.

APPLICATIONS

Suitable for the installation of absorbent (ceramic) tiles of any type and size, natural stones, as well as non-absorbent tiles (gres porcelanato, cotto, etc.) of small and medium sizes. It is applied on floors, on common substrates such as concrete, floor screeds, etc. Suitable for indoor and outdoor applications.

PACKAGING	ITEMS/BOX	ITEMS/PAL.
5kg plastic bag	4	144
25kg paper bag		60

CONSUMPTION

Approximately 2-5 kg/m² depending on the substrate's roughness and the dimensions of the tiles.

KP 250 SPECIAL

High performance
polymer-modified
tile adhesive
Type C2 TE



DESCRIPTION

High performance, polymer-modified, cement-based tile adhesive. It exhibits increased initial and final adhesion strength, no vertical slip, extended open time and increased resistance to moisture. Classified as **C2 TE** type cementitious adhesive according to European standard EN 12004-1.

APPLICATIONS

Suitable for the installation of absorbent (ceramic) tiles of any type and size, natural stones, and medium-sized non-absorbent tiles (cotto, gres-porcelanato). It is applied on common substrates such as concrete, floor screeds, masonry and renders, but also on cement, gypsum or fiber boards*. Also suitable for installing tiles over existing floors (old tile layers, terrazzo, etc.) provided that the surface is treated with suitable primer. Suitable for indoor and outdoor applications.

PACKAGING	ITEMS/PAL.
25kg paper bag	60

CONSUMPTION

Approximately 2-5 kg/m² depending on the substrate's roughness and the dimensions of the tiles.

KP 300 FLEXY

Elastic polymer-modified
tile adhesive
Type C2 TE S1



DESCRIPTION

High performance, deformable, polymer-modified, cement-based tile adhesive. It exhibits high initial and final adhesion strength, and increased resistance to moisture, frost and temperature changes. It provides remarkable workability, no vertical slip and extended open time. Classified as **C2 TE S1** type cementitious adhesive according to the European standard EN 12004-1.

APPLICATIONS

Suitable for the installation of large-format tiles up to 1.20x1.20m, glass mosaic tiles, and any other type of absorbent and non-absorbent tiles. It is applied on walls and floors, on concrete, floor screeds, masonry and render, gypsum, cement or fiber boards*, but also on substrates with high demands for adhesion, flexibility and moisture resistance (e.g. swimming pools, under floor heating installations, terraces, balconies, old tile layers, etc.).

PACKAGING	ITEMS/BOX	ITEMS/PAL.
5kg plastic bag	4	144
25kg paper bag		60

CONSUMPTION

Approximately 2-5 kg/m² depending on the substrate's roughness and the dimensions of the tiles.

* It is recommended, dry wall surfaces (gypsum boards, cement boards, fiber boards, etc.) to be treated with FINO•CONTACT primer before tile installation.

KP 400 MARBLE & GRANITE

High performance acrylic adhesive for marble & granite
Type C2 TE



DESCRIPTION

High performance, polymer-modified, cement-based tile adhesive. It exhibits increased adhesion strength, extended open time and strong thixotropic consistency preventing vertical slip even with heavy tiles. Can be applied in thick layers up to 15mm. Protects sensitive marbles from staining. Classified as **C2 TE** type cementitious adhesive according to European standard EN 12004-1.

APPLICATIONS

Ideal for the installation of sensitive white and highly absorbent marbles and natural granites. Also suitable for the installation of absorbent and non-absorbent tiles. It is applied on walls and floors, on common substrates (e.g. concrete, floor screeds, masonry, renders, etc.), but also on gypsum, cement or fiber boards*. It can be applied on surfaces subject to small contractions-expansions or heavy traffic (bathrooms, shopping centers, hotels, etc.).

PACKAGING	ITEMS/PAL.
25kg paper bag	60

CONSUMPTION

Approximately 2-5 kg/m² depending on the substrate's roughness and the dimensions of the tiles.

KP 450 RAPID

Fast-setting polymer-modified tile adhesive
Type C2 FT



DESCRIPTION

Fast-setting, polymer-modified, cement-based tile adhesive. It exhibits increased initial and final adhesion strength, no vertical slip and resistance to moisture and temperature changes. Tiled surfaces can be walked and grouted after 3-4 hours. Classified as **C2 FT** type cementitious adhesive according to European standard EN 12004-1. Produced in white and grey.

APPLICATIONS

For the installation of absorbent (ceramic) and non-absorbent tiles (gres porcelanato), as well as decorative natural or artificial stones. It is applied on walls and floors, on common substrates (e.g. concrete, floor screeds, masonry, renders, etc.), but also on gypsum, cement or fiber boards*. Also suitable for installing tiles over existing floors (old tile layers, terrazzo, etc.) provided that the surface is treated with a suitable primer. It is ideal for cases where the surfaces must be used in a short time (store refurbishing, etc.). Suitable for indoor and outdoor applications.

PACKAGING	ITEMS/BOX	ITEMS/PAL.
5kg plastic bag WHITE	4	144
25kg paper bag WHITE/GREY		60

CONSUMPTION

Approximately 2-5 kg/m² depending on the substrate's roughness and the dimensions of the tiles.

KP 500 ELASTIC

High performance elastic polymer-modified tile adhesive
Type C2 TE S1



DESCRIPTION

High performance, elastic, polymer-modified, cement-based tile adhesive. It exhibits strong adhesion strength and exceptional resistance to moisture, frost and temperature changes. It provides excellent workability, no vertical slip and extended open time. Classified as **C2 TE S1** type cementitious adhesive according to European standard EN 12004-1.

APPLICATIONS

Suitable for the installation of large-format tiles up to 1.20x1.20m, glass mosaic tiles, terrazzo and any other type of absorbent and non-absorbent tiles. It is applied on walls and floors, on concrete, floor screeds, masonry and render, gypsum, cement or fiber boards*, over existing floors (old tile layers, terrazzo, etc.) but also in moist areas and on substrates subject to contraction-expansions, heavy traffic and thus with high demands for adhesion, flexibility and moisture resistance (e.g. swimming pools, under floor heating installations, terraces, balconies, shopping centers, hotels, etc.).

PACKAGING	ITEMS/PAL.
25kg paper bag	60

CONSUMPTION

Approximately 2-5 kg/m² depending on the substrate's roughness and the dimensions of the tiles.

KP 550 GEL ULTRA S1

High performance
GEL-type deformable
cementitious adhesive
Type C2 TE S1



NEW

DESCRIPTION

Deformable cementitious tile adhesive with GEL technology, for the installation of any type and dimension ceramic tiles and natural stones.

GEL technology provides KP 550 GEL with excellent workability and performance characteristics.

It exhibits strong thixotropy in combination with very smooth texture, almost liquid, which withstands the weight of the tiles, allows total wetting of the backside of the tile, while it significantly reduces the effort of the installer during spreading of the adhesive. Classified as **C2 TE S1** type cementitious adhesive according to European standard EN 12004-1.

APPLICATIONS

KP 550 GEL is suitable for the installation of any type of ceramic and porcelain tiles, thin and large-format tiles, glass-mosaic tiles, terrazzo slabs, marbles, natural stones and granite, on indoor and outdoor surfaces.

It can be applied on any substrate like concrete, cement floor-screeds, existing floors covered with terrazzo, marble or tiles, renders, cement, gypsum or fiber boards*, etc.

It is ideal for swimming pools, rooftops, terraces, balconies, moist areas (showers, baths, etc.) under-floor heating installations, high-traffic areas (shopping centers, hotels, etc.) and any other application with increased demands in flexibility, adhesion strength and resistance to moisture.

PACKAGING	ITEMS/PAL.
23kg paper bag	60

CONSUMPTION

Approximately 2-5 kg/m² depending on the substrate's roughness and the dimensions of the tiles.

KP 600 ULTRA FLEX

Highly elastic
polymer-modified
tile adhesive
Type C2 TE S2



DESCRIPTION

Highly-deformable, polymer-modified, cement-based tile adhesive, for highly demanding applications.

It exhibits exceptional all-around performance with very high adhesion strength, no vertical slip, extended open time and remarkable resistance to moisture, frost and temperature changes. Classified as **C2 TE S2** type cementitious adhesive according to European standard EN 12004-1.

APPLICATIONS

Suitable for the installation of large-format tiles (indicatively 3.0x1.6m), sensitive natural or artificial tiles treated with epoxy-based reinforcing back-coat, but also any other type and size of absorbent and non-absorbent tiles, glass mosaics, etc. It is applied on walls and floors, on concrete, floor screeds, masonry and render, gypsum, cement or fiber boards*, over existing floors (old tile layers, terrazzo, etc.).

Also on substrates subject to strong contraction-expansions, with high demands for adhesion, flexibility and watertightness (e.g. metallic surfaces, swimming pools, under floor heating installations, terraces, balconies, shopping centers, hotels, etc.). Suitable for indoor and outdoor applications.

PACKAGING	ITEMS/PAL.
25kg paper bag	60

CONSUMPTION

Approximately 2-5 kg/m² depending on the substrate's roughness and the dimensions of the tiles.

* It is recommended, dry wall surfaces (gypsum boards, cement boards, fiber boards, etc.) to be treated with FINO•CONTACT primer before tile installation.

3.2 special application adhesives



KF 530

Refractory mortar
for fixing and grouting
firebricks



DESCRIPTION

Cementitious mortar based on refractory cement and special additives, for fixing and grouting firebricks. It exhibits excellent resistance to high temperatures (1000°C), rapid strength development, strong bonding with the firebricks and the substrate, and excellent thixotropic workability. Classified as M30-A1 mortar according to European standard EN 998-2.

APPLICATIONS

Ideal for fixing and grouting firebricks in fireplaces, ovens, chimneys, barbeques, etc., as well as for repairing damaged joints of firebricks. Suitable for indoor and outdoor applications.

PACKAGING	ITEMS/BOX	ITEMS/PAL.
5kg plastic bag	4	144
25kg paper bag		60

CONSUMPTION

Indicatively: 5 kg/m² for firebricks with dimensions of 20x10x3cm and 1cm joint width.

PORO 510

Polymer-modified
cementitious adhesive
for aerated concrete blocks



DESCRIPTION

Cement-based, polymer-modified adhesive mortar, used for construction purposes of AAC blocks, as well as, for the filling of joints between blocks. It exhibits high adhesion strength and resistance to moisture. Due to its special grain-size distribution and viscosity it enables thin-bed application and thus prevents the formation of thermal bridges during the building of thermal insulating AAC blocks. Classified as thin-bed masonry mortar type M5-A1 according to EN 998-2.

APPLICATIONS

Ideal for construction purposes of AAC blocks, as well as, the filling of joints between blocks. Suitable for indoor and outdoor applications.

PACKAGING	ITEMS/PAL.
25kg paper bag	60

CONSUMPTION

Approximately 20-25 kg/m³ of AAC blocks.

GL 520

Polymer-modified adhesive
for glass blocks



DESCRIPTION

Cement-based, polymer-modified mortar, for building and pointing glass blocks. It exhibits strong adhesion to the surface of glass-blocks, thixotropy and increased resistance to moisture, temperature changes and abrasion. Classified as M20-A1 type mortar according to European standard EN 998-2.

APPLICATIONS

For building and pointing glass blocks. Suitable for indoor and outdoor areas.

PACKAGING	ITEMS/BOX	ITEMS/PAL.
5kg plastic bag	4	144
25kg paper bag		60

CONSUMPTION

Approximately 15 kg/m² for masonry with glass blocks of usual dimensions.

3.3 grouts



GROUT 0-3

Acrylic water repellent
tile grout
Type CG2



DESCRIPTION

Cement-based, polymer-modified grouting mortar for tile-joints. It exhibits excellent resistance to abrasion, moisture, mold growth and frost, as well as excellent colour stability.

Available in 24 colours (see colour chart on page 35). Classified as **CG2** type cementitious tile grout according to European standard EN 13888.

APPLICATIONS

Suitable for grouting joint-widths 0-3mm on walls and floors, between tiles of any type, marble, glass mosaic tiles and any occasion that demands high aesthetic result and very smooth grout. Suitable for indoor and outdoor areas.

PACKAGING	ITEMS/BOX	ITEMS/PAL.
5kg plastic bag	4	144

CONSUMPTION

Depending on the width of the joint and the dimensions of the tiles. Consult the table of indicative grout consumptions on page 36.

GROUT 3-10

Acrylic water repellent
tile grout
Type CG2



DESCRIPTION

Cement-based, polymer-modified grouting mortar for tile-joints. It exhibits high resistance to abrasion, moisture and frost, as well as excellent colour stability.

Available in 24 colours (see colour chart on page 35). Classified as **CG2** type cementitious tile grout according to European standard EN 13888.

APPLICATIONS

Suitable for grouting joint-widths 3-10mm on walls and floors, between tiles of any type, glass mosaics, marbles, natural stones, etc. Suitable for indoor and outdoor areas.

PACKAGING	ITEMS/BOX	ITEMS/PAL.
5kg plastic bag	4	144

CONSUMPTION

Depending on the width of the joint and the dimensions of the tiles. Consult the table of indicative grout consumptions on page 36.

EPOXY GROUT 2-12

2-component epoxy grout
Type RG



DESCRIPTION

Bi-component, solvent-free epoxy grout. It exhibits exceptionally high mechanical strength and resistance to chemicals, while it is water and stain resistant.

Classified as **RG** type grouting material according to European standard EN 13888.

Available in 5 colours: EP110 white, EP120 beige, EP130 light grey, EP140 grey and EP150 black.

APPLICATIONS

Suitable for grouting joint-widths 2-12mm on walls and floors, between tiles of any type, glass mosaics, marbles, granites and other natural or artificial stones. It is ideal for grouting tiles or glass mosaics in swimming pools, chemical, food and beverage industries, dairy industries, battery manufacturing and recharging industries, sewage treatment plants, professional kitchens, chemical laboratories and hospitals.

PACKAGING
3kg plastic container
5kg plastic container
10kg plastic container

CONSUMPTION

Depending on the width of the joint and the dimensions of the tiles. Consult the table of indicative grout consumptions on page 36.

ELASTOGROUT

Polymeric liquid resin for acrylic tile grouts



DESCRIPTION

Aqueous dispersion of synthetic polymers used in replacement of the mixing water of the cement-based grouts GROUT 0-3 and GROUT 3-10, for improving their properties. It improves the all-around properties of the cement-based grouts and more specifically their mechanical strength, watertightness and resistance to mold growth and chemicals.

APPLICATIONS

The ELASTOGROUT system with the cement-based grouts is applied in cases of joints on balconies, terraces and swimming pools, in areas that are frequently steam cleaned, in areas with heavy traffic, for the repair of old joints, glass mosaics, etc.

PACKAGING	ITEMS/BOX	ITEMS/PAL.
1kg plastic container	14	504
5kg plastic container		128
20kg plastic container		39

CONSUMPTION

Approximately 1.3-1.6kg / 5kg grout, depending on the type and colour of the grout.

3.4 auxiliary materials



TILE LEVELLING SPACERS AND WEDGES

Plastic spacers (clips) for installing 3-12mm thick tiles, and high-density polyethylene (HDPE) wedges for installing 3-24mm thick tiles and marbles. They simplify the installation of large format tiles, avoiding the differences in height and keeping them aligned until the adhesive sets.

SPACERS CODE	THICKNESS (mm)	ITEMS/PACKAGING
ΑΠ1	1	100
ΑΠ2	2	100
ΑΠ3	3	100
WEDGES CODE	THICKNESS (mm)	ITEMS/PACKAGING
ΣΦ1	3-24	100



CROSS-SHAPED TILE SPACERS

For creating joints when installing ceramic tiles.

CODE	THICKNESS (mm)	ITEMS/PACKAGING
Σ1	1	500
Σ2	2	500
Σ3	3	500
Σ4	4	500
Σ5	5	500



T-SHAPED TILE SPACERS

Plastic T-shaped spacers for creating joints when installing ceramic tiles.

CODE	THICKNESS (mm)	ITEMS/PACKAGING
T2	2	500
T3	3	500
T5	5	500



TILE WEDGES

Plastic wedges for installing ceramic tiles.

CODE	THICKNESS (mm)	ITEMS/PACKAGING
Φ1	3-5	1000

GROUT COLOUR CHART FOR GROUT 0-3 & GROUT 3-10

	WHITE	F 10
	PEARL GREY	F 20
	LONDON SKY	F 30
	GREY	F 40
	CEMENT GREY	F 50
	GRAFHITE	F 60
	BLACK	F 70
	VANILLA	F 80
	LEMON	F 90
	CORAL	F 100
	BEIGE	F 110
	CREAM	F 120
	CARAMEL	F 130
	LIGHT BROWN	F 140
	CERAMIC	F 150
	CHERRY BROWN	F 160
	DARK BROWN	F 170
	MOCCA	F 180
	COCOA	F 190
	BRIGHT SKY	F 200
	BLUE	F 210
	TURQUOISE	F 220
	LIGHT GREEN	F 230
	PISTACHIO	F 240

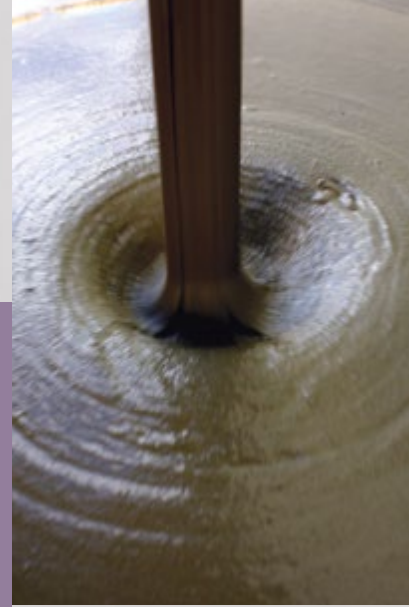
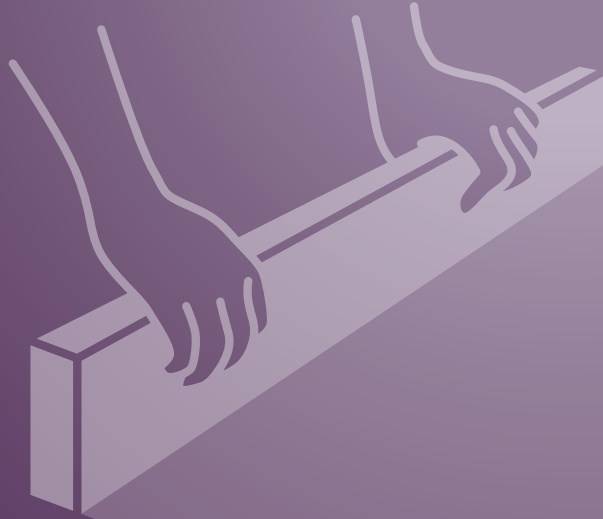
Rendering of colours in the chart is only indicative.

grout consumption (kg/m²)

indicative, depending on the size of the tiles and the width of the joints

TILE DIMENSIONS (mm)	JOINT WIDTH (mm)							
	1	2	3	4	5	7	9	10
20 x 20 x 4	0.60	1.20	1.80					
50 x 50 x 4	0.25	0.50	0.70					
100 x 100 x 8	0.25	0.50	0.70	1.00	1.20			
200 x 200 x 8	0.10	0.25	0.35	0.50	0.60	0.80		
250 x 450 x 8	0.10	0.15	0.20	0.30	0.40	0.50		
300 x 600 x 10	0.10	0.15	0.20	0.30	0.40	0.50	0.70	0.80
300 x 600 x 12	0.10	0.20	0.30	0.35	0.45	0.60	0.80	0.90
330 x 330 x 8	0.10	0.15	0.20	0.30	0.40	0.50		
330 x 330 x 10	0.10	0.20	0.30	0.35	0.45	0.65	0.80	0.90
400 x 400 x 8	0.10	0.15	0.20	0.25	0.30	0.40		
400 x 400 x 10	0.10	0.20	0.20	0.30	0.40	0.50	0.70	
450 x 450 x 10	0.10	0.15	0.20	0.30	0.35	0.50	0.60	0.70
450 x 450 x 12	0.10	0.20	0.25	0.30	0.40	0.60	0.70	0.80
500 x 500 x 9	0.05	0.10	0.15	0.20	0.30	0.40	0.50	
600 x 600 x 10	0.05	0.10	0.15	0.20	0.25	0.35	0.45	0.50
600 x 600 x 12	0.05	0.10	0.20	0.25	0.30	0.40	0.55	0.60
800 x 800 x 10	0.05	0.10	0.10					
800 x 800 x 12	0.05	0.10	0.15					
600 x 1200 x 12	0.05	0.10	0.15					
1200 x 1200 x 12	0.05	0.05	0.10					

4. floor screeds



4. floor screeds



FLOW 1•10 RAPID

Fast-setting self-levelling
polymer-modified cementitious
floor screed

(for 1-10mm thick layers)



DESCRIPTION

Fast-setting and drying, self-levelling mortar, based on cementitious binders, for durable floors from 1 to 10mm thick.

It provides a totally level final surface with very high resistance to abrasion and mechanical strengths, as well as excellent bonding to the substrate. Available for light foot traffic after 2-3 hours. Classified as CT-C40-F10-AR1 type cementitious screed mortar according to European standard EN 13813.

APPLICATIONS

Ideal for levelling and smoothing floors that will be covered with tiles, carpet, wooden or plastic floor, epoxies, etc. Suitable for levelling over underfloor heating systems and for areas subject to heavy pedestrian (shopping centers, hotels, etc.) and vehicle traffic (warehouses, parkings, etc.). Also suitable as final layer in areas such as basements, lofts and warehouses. Applied in 1-10mm thick layers. The surfaces to be covered with FLOW 1•10 RAPID should be treated first with the suitable primers PRIMER FP•31 and FINO•CONTACT. Suitable for indoor applications.

PACKAGING	ITEMS/PAL.
25kg paper bag	60

CONSUMPTION

Approximately 1.5 kg/m²
for a 1mm thick layer.

FLOW 3•30 ECO•RAPID

Fast-setting self-levelling
polymer-modified cementitious
floor screed

(for 3-30mm thick layers)



NEW

DESCRIPTION

Fast-setting and drying, self-levelling mortar, based on cementitious binders, for durable floors from 3 to 30mm thick.

It provides a totally level final surface with very high resistance to abrasion and mechanical strengths, and excellent bonding to the substrate. Available for light foot traffic after 3 hours. Classified as CT-C30-F9-AR2 type cementitious screed mortar according to European standard EN 13813.

APPLICATIONS

Ideal for levelling and smoothing floors that will be covered with tiles, carpet, wood or plastic floor, epoxies, etc. Suitable for levelling over underfloor heating systems and for areas subject to heavy pedestrian (shopping centers, hotels, etc.) and vehicle traffic (warehouses, parkings, etc.). Also suitable as final layer in areas such as basements, lofts and warehouses. Applied in 3-30mm thick layers. The surfaces to be covered with FLOW 3•30 ECO•RAPID should be treated first with the suitable primers PRIMER FP•31 and FINO•CONTACT. Suitable for indoor applications.

PACKAGING	ITEMS/PAL.
25kg paper bag	60

CONSUMPTION

Approximately 1.7 kg/m²
for a 1mm thick layer.

FLOW 5•50 RAPID

Fast-setting self-levelling
polymer-modified
cementitious floor screed

(for 5-50mm thick layers)



DESCRIPTION

Fast-setting and drying, self-levelling mortar, based on cementitious binders, for durable floors from 5 to 50mm thick.

It provides a totally level final surface with very high resistance to abrasion and mechanical strengths, as well as excellent bonding to the substrate. Available for light foot traffic after 2-3 hours. Classified as CT-C40-F9-A9 type cementitious screed mortar according to European standard EN 13813.

APPLICATIONS

Ideal for levelling and smoothing floors that will be covered with tiles, carpet, wooden or plastic floor, epoxies, etc. Suitable for levelling over underfloor heating systems and for areas subject to heavy pedestrian (shopping centers, hotels, etc.) and vehicle traffic (warehouses, parkings, etc.). Also suitable as final layer in areas such as basements, lofts and warehouses. Applied in 5-50mm thick layers. The surfaces to be covered with FLOW 5•50 RAPID should be treated first with the suitable primers PRIMER FP•31 and FINO•CONTACT. Suitable for indoor applications.

PACKAGING	ITEMS/PAL.
25kg paper bag	60

CONSUMPTION

Approximately 1.7 kg/m²
for a 1mm thick layer.

FLOW 3-10 DÉCOR

Coloured fast-setting self-levelling polymer-modified cementitious floor screed (for 3-10mm thick layers)



DESCRIPTION

Coloured, fast-setting and drying, self-levelling mortar, based on cementitious binders, for decorative and durable floors from 3 to 10mm thick.

It provides a totally level final surface with very high resistance to abrasion and mechanical strengths, and excellent bonding to the substrate.

Available for light foot traffic after 3-4 hours.

Classified as CT-C40-F9-AR2 type cementitious screed mortar according to European standard EN 13813.

Produced in 7 colours: white, beige, light grey, anthracite grey, red, yellow and dark brown.

PACKAGING	ITEMS/PAL.
25kg paper bag	60

CONSUMPTION

Approximately 1.5 kg/m² for a 1mm thick layer.

APPLICATIONS

Ideal for levelling and decorating interiors such as offices, playrooms, exhibitions, shops, hotels, shopping malls, etc.

Suitable for levelling over underfloor heating systems and for areas subject to heavy foot traffic (shopping centers, hotels, etc.).

Applied in 3-10mm thick layers.

Suitable for indoor applications.

FS 100

Fiber-reinforced cementitious levelling floor screed (for layers up to 10cm thick)



DESCRIPTION

Cement-based floor screed, for filling and levelling of floors.

It exhibits excellent workability as it demands minimum effort during levelling, while it exhibits increased mechanical strength and 20% reduced weight compared to conventional floor screeds.

Classified as CT-C7-F3-A15 type cementitious screed mortar according to European standard EN 13813.

PACKAGING	ITEMS/PAL.
25kg paper bag	60

CONSUMPTION

Approximately 13-14 kg/m² for a 1cm thick layer.

APPLICATIONS

Suitable for filling and levelling of floors to be covered with tiles, marble or other natural stones, parquet, etc.

Applied also for forming slopes on flat roofs prior to the application of waterproofing membranes.

Applied in layers up to 10cm thick.

Suitable for indoor and outdoor applications.

FS 600 FAST-SCREED

Fast-curing low-shrinkage cement mortar for the construction and levelling of floors (for 2-6cm thick layers)



DESCRIPTION

Fast-curing, low-shrinkage, cement-based mortar, for the construction and levelling of floors prior to the final floor covering.

It is characterized by rapid setting and hardening while it maintains prolonged workable time.

It exhibits fast strength development and rapid hardening, as well as very good bonding to the substrate, and enhanced workability.

It produces a level and durable final surface that can be covered after a short time.

Classified as CT-C30-F7-A1_{f1} type cementitious screed mortar according to European standard EN 13813.

PACKAGING	ITEMS/PAL.
30kg paper bag	48

CONSUMPTION

Approximately 18 kg/m² for a 1cm thick layer, depending on compaction.

APPLICATIONS

Suitable for forming bonded and unbonded floors in internal and external areas, prior to the installation of ceramic tiles, natural stones, microcement mortars, wood, PVC, linoleum, etc.

The floors can be covered with ceramic tiles after 24 hours and with natural stones after 48 hours, while they are completely dry after 4 days.

Applied in 2-6cm thick layers.

Suitable for indoor and outdoor applications.

HT 250 HARD TOP

Industrial floor surface
hardener



DESCRIPTION

Cement-based mortar used to improve the surface hardness and resistance to heavy loads of industrial floors. Classified as CT-C70-F7-AR2 type cementitious screed mortar according to European standard EN 13813. Produced in grey and 6 more colours*: white, beige, brick-red, yellow, light blue and green.

APPLICATIONS

It is used on still damp concrete floors to produce surfaces with significantly increased abrasion and heavy-load resistance, as well as reduced water permeability. Suitable for indoor and outdoor areas, parking lots, workshops, garages, warehouses, loading-unloading areas, etc. In cases where further densification and hardening of the finished surface is required, apply the liquid concrete densifier SIL•HARD Li⁺. For the optimal curing of the finished surface, especially during summer, apply the concrete curing products FINOCURE•W and FINOCURE•AC.

PACKAGING	ITEMS/PAL.
25kg paper bag GREY/COLOURED	60

CONSUMPTION

Approximately 3-6 kg/m².

SIL•HARD Li⁺

Liquid densifier and sealer
for concrete and cementitious
mortars



DESCRIPTION

Aqueous solution of active silicate salts with high penetrating ability. The active substances of SIL•HARD Li⁺ react chemically with the soft and porous calcium hydroxide that is formed during cement hydration and convert it to insoluble and chemically resistant crystals of calcium silicate hydrate, thus reducing the porosity and significantly increasing the durability of concrete and cementitious mortars. In comparison to common concrete densifiers the active substances of SIL•HARD Li⁺ additionally react with CO₂ to form a hydrophobic polymer within the pores and the surface. This synergistic activity effectively seals the concrete and provides water resistance from the first day after application.

APPLICATIONS

It is applied for the densification and hardening of the surface of concrete, industrial floors (after the application of the industrial floor surface hardener HT 250 HARD TOP), terrazzo floors and cementitious mortars. Additionally, for the renovation of concrete floors in order to strengthen their structure, to reduce dust generation and increase surface hardness and abrasion resistance.

PACKAGING	ITEMS/PAL.
5kg plastic container	128
20kg plastic container	39

CONSUMPTION

0.15-0.25 kg/m² depending
on the surface's absorbency.

5. Finoclima® external thermal insulation composite systems



Finoclima®



- Finoclima® products
- auxiliary materials



FC 1100

Polymer-modified fiber-reinforced adhesive & reinforcing mortar for thermal insulation boards



DESCRIPTION

Fiber-reinforced, polymer-modified cementitious mortar, for the installation and the surface-reinforcement of thermal insulation boards on buildings' facades. It exhibits high bonding strength on the thermal insulation boards, excellent adhesion to the substrate, elasticity and resistance to moisture and frost. Classified as general purpose cementitious mortar type GP CSIV, W2 according to the European standard EN 998-1. FC 1100 is part of the certified ETIC systems **Finoclima® MINERAL** (ETA 15/0720), **Finoclima® MW** (ETA 20/0174) and **Finoclima® EPS** (ETA 20/0175).

APPLICATIONS

Used in combination with the FC 1200 and FC 1300 renders for the external thermal insulation of the facades of the buildings, composing the **Finoclima®** certified external thermal insulation composite systems. It is suitable for the installation and reinforcement of thermal insulation boards from expanded or extruded polystyrene, mineral wool, etc., on facades of buildings. Additionally, reinforced with fiberglass mesh **clima•net** 160g/m², it is applied on the exterior surface of the installed thermal insulation boards creating the ideal base-coat for the subsequent render layer.

PACKAGING	ITEMS/PAL.
25kg paper bag WHITE/GREY	60

CONSUMPTION

- As an adhesive: approximately 4-5 kg/m².
- As a base-coat: approximately 1.5 kg/m² for a 1mm thick layer.

FC 1100 THERMO•FIX

Coarse-grained polymer-modified fiber-reinforced adhesive & reinforcing mortar for thermal insulation boards



DESCRIPTION

Fiber-reinforced, polymer-modified cementitious mortar, for the installation and the surface-reinforcement of thermal insulation boards on buildings' facades. It exhibits high bonding strength on the thermal insulating boards, excellent adhesion to the substrate, elasticity and resistance to moisture and frost. Classified as general purpose cementitious mortar type GP CSIV, W2 according to the European standard EN 998-1.

APPLICATIONS

FC 1100 THERMO•FIX is used in combination with the FC 1200 and FC 1300 renders for the external thermal insulation of the facades of the buildings. It is suitable for the installation and reinforcement of thermal insulation boards from expanded or extruded polystyrene, mineral wool, etc., on facades of buildings. Additionally, reinforced with fiberglass mesh **clima•net** 160g/m², it is applied on the exterior surface of the installed thermal insulation boards creating the ideal base-coat for the subsequent finishing coat.

PACKAGING	ITEMS/PAL.
25kg paper bag WHITE/GREY	60

CONSUMPTION

- As an adhesive: approximately 4-6 kg/m².
- As a base-coat: approximately 1.5 kg/m² for a 1mm thick layer.

FC 1100 ORGANIC

Organic, fiber-reinforced, ready-to-use adhesive & reinforcement coating for thermal insulation boards



DESCRIPTION

Ready-to-use, acrylic, fiber-reinforced coating/adhesive for the external thermal insulation systems of the facades of buildings. It exhibits high elasticity and bond strength of the thermal insulation boards, as well as strong adhesion on every substrate, and resistance to moisture. Classified as external coating based on organic binders type V2-W2 according to the European standard EN 15824, and as dispersion adhesive type D1E according to the European standard EN 12004-1.

APPLICATIONS

It is used in combination with the finishing coatings FC 1200 and FC 1300 for the external thermal insulation of the buildings' facades as part of the **Finoclima**® ETIC systems. It is ideal for the reinforcement of the surface of the thermal insulating boards in combination with the reinforcing fiberglass mesh **clima•net** 160g/m². Additionally, it can be used for the bonding of thermal insulating boards on the external surfaces of buildings.

PACKAGING	ITEMS/PAL.
5kg plastic container OFF-WHITE	96
25kg plastic container OFF-WHITE	24

CONSUMPTION

- As a reinforcing coating: approximately 3-4 kg/m².
- As an adhesive: approximately 4-5 kg/m².

FC 1200

Polymer-modified fiber-reinforced water resistant final-coat render white



DESCRIPTION

Final-coat render, highly polymer-modified, fiber-reinforced, enhanced with special hydrophobic agents. It exhibits exceptional performance against moisture, frost and severe weather conditions, increased mechanical strengths, flexibility and strong adhesion with the substrate. Produced in two grain sizes, 1.0mm and 3.5mm (graffiato), and in 6 premixed colour shades (see colour chart). It can also be easily coloured with NATURAL COLOURS pigments in powder form. Classified as general purpose mortar (GP) type CS II, W2 according to the European standard EN 998-1. FC 1200 is part of the ETIC system **Finoclima**® MINERAL, certified with the European Technical Approval ETA-15/0720.

APPLICATIONS

Used as final-coat render for the finishing and smoothing of walls during rendering works. It can be applied on common substrates over the base-coat render or in ETICS after the levelling mortar FC 1100. FC 1200 is ideal for areas with high ambient moisture levels such as coastal and mountainous areas, due to its strong water repellency and water-vapor permeability. Suitable for indoor and outdoor applications.

PACKAGING	ITEMS/PAL.
25kg paper bag WHITE/ COLOURED	60

CONSUMPTION

Approximately 6-7 kg/m² for a 5mm thick layer.

colour chart of coloured plasters FC 1200



Rendering of colours in the chart is only indicative.

FC 1300 ACRYL

Ready-to-use acrylic render



DESCRIPTION

Ready-to-use render, based on acrylic resins, for the aesthetic finish of ETIC systems but also as decorative coating over common substrates. It exhibits high elasticity, excellent water-repellence, strong bonding strength to the substrate, while it allows water-vapour permeability of the building elements. Produced white or coloured in 260 UV-resistant colour shades according to the **Finoclima® COLOUR PALETTE** colour system, and in four different grain sizes (1.0-1.2-1.5-2.4 mm) depending on the desired aesthetic finish.

APPLICATIONS

Applied as the finishing decorative coating for the **Finoclima®** certified ETIC systems (ETA 15/0720, ETA 20/0174, ETA 20/0175). Also suitable to be applied on any common substrate, e.g. render, plaster, cement/plasterboard. Suitable for indoors and outdoors.

PACKAGING	ITEMS/PAL.
5kg plastic container WHITE/ COLOURED	96
25kg plastic container WHITE/ COLOURED	24

CONSUMPTION

FC 1300-1.0mm: 1.8-2.0 kg/m²
 FC 1300-1.2mm: 1.9-2.2 kg/m²
 FC 1300-1.5mm: 2.0-2.5 kg/m²
 FC 1300-2.4mm: 2.8-3.2 kg/m²

FC 1300 SILOXANE

Ready-to-use acrylic render, siloxane improved



DESCRIPTION

Ready-to-use render, based on acrylic resins, modified with polysiloxane water-repelling additives, for the aesthetic finish of ETIC systems, but also as decorative coating over common substrates. It exhibits significantly increased water-repellency compared to common acrylic coatings while it maintains high elasticity and adhesion and allows water-vapour permeability of the building elements. Produced white or coloured in 260 UV-resistant colour shades according to the **Finoclima® COLOUR PALETTE** colour system, and in four different grain sizes (1.0-1.2-1.5-2.4 mm) depending on the desired aesthetic finish.

APPLICATIONS

Applied as the finishing decorative coating for the **Finoclima®** certified ETIC systems (ETA 20/0174, ETA 20/0175). Suitable to be applied on any common substrate, e.g. render, plaster, cement/plasterboard. Suitable for indoors and outdoors.

PACKAGING	ITEMS/PAL.
5kg plastic container WHITE/ COLOURED	96
25kg plastic container WHITE/ COLOURED	24

CONSUMPTION

FC 1300-1.0mm: 1.8-2.0 kg/m²
 FC 1300-1.2mm: 1.9-2.2 kg/m²
 FC 1300-1.5mm: 2.0-2.5 kg/m²
 FC 1300-2.4mm: 2.8-3.2 kg/m²

ACRYLIC PRIMER 1350

Adhesion primer for acrylic renders



DESCRIPTION

Ready-to-use primer, based on acrylic resins, containing quartz aggregates, that promotes adhesion of the decorative renders (cement, acrylic or waterglass based) on the substrate. It exhibits excellent adhesion on the substrate. Produced white or coloured in 260 UV-resistant colour shades according to the **Finoclima® COLOUR PALETTE** colour system, thus ensuring the colour uniformity of the decorative finish.

APPLICATIONS

It is used to enhance adhesion of the decorative renders FC 1300•ACRYL and FC 1300•SILOXANE of the **Finoclima®** certified ETIC systems (ETA 15/0720, ETA 20/0174, ETA 20/0175) on smooth and absorbent substrates, e.g. cement/gypsum boards, render/plaster, fair-faced concrete. Suitable for indoors and outdoors.

PACKAGING	ITEMS/PAL.
5kg plastic container WHITE/ COLOURED	96
20kg plastic container WHITE/ COLOURED	24

CONSUMPTION

Approximately 0.25-0.30 kg/m² depending on the surface's absorbency and roughness.

FC 1300 SILICONE

Ready-to-use silicone render



DESCRIPTION

Ready-to-use render, based on silicone and acrylic resins, modified with polysiloxane water-repelling additives, for the aesthetic finish of ETIC systems, but also as decorative coating over common substrates.

It exhibits high elasticity, strong bonding strength to the substrate, as well as maximum water repellent characteristics while it maintains high water-vapour permeability properties. Produced white or coloured in 260 UV-resistant colour shades according to the **Finoclima** COLOUR PALETTE colour system, and in four different grain sizes (1.0-1.2-1.5-2.4 mm) depending on the desired aesthetic finish.

APPLICATIONS

Applied as the finishing decorative coating for the **Finoclima** certified ETIC systems (ETA 20/0174, ETA 20/0175).

Also suitable to be applied on any common substrate, e.g. render, plaster, cement/plasterboard.

Ideal for buildings located in areas with a particularly damp climate.

Suitable for indoors and outdoors.

PACKAGING	ITEMS/PAL.
5kg plastic container WHITE/ COLOURED	96
25kg plastic container WHITE/ COLOURED	24

CONSUMPTION

FC 1300-1.0mm: 1.8-2.0 kg/m²

FC 1300-1.2mm: 1.9-2.2 kg/m²

FC 1300-1.5mm: 2.0-2.5 kg/m²

FC 1300-2.4mm: 2.8-3.2 kg/m²

FC 1300 FLEX•ROLL SILICONE

Ready-to-use flexible roller-applied silicone render



DESCRIPTION

Ready-to-use, flexible, water-resistant render, based on silicone and acrylic resins, for the aesthetic finish of ETIC systems, but also as decorative coating over common substrates.

It is water-resistant and exhibits high elasticity and excellent workability since it is applied with a roller like common paint. It adheres strongly on the surfaces and exhibits excellent water-vapour permeability characteristics due to its silicone-based composition.

Produced white or coloured in 260 UV-resistant colour shades according to the **Finoclima** COLOUR PALETTE colour system.

APPLICATIONS

Applied as the finishing decorative coating for the **Finoclima** certified ETIC systems (ETA 15/0720, ETA 20/0174, ETA 20/0175).

Also suitable to be applied on any common substrate, e.g. cement/plaster boards, concrete, render, plaster, etc. It effectively renews the colour and the appearance of the buildings fast and easy.

It is ideal for the aesthetic repair of old facades as it covers existing cracks and prevents the formation of new ones.

Suitable for indoors and outdoors.

PACKAGING	ITEMS/PAL.
5kg plastic container WHITE/ COLOURED	96
25kg plastic container WHITE/ COLOURED	24

CONSUMPTION

Approximately 1.2-1.5 kg/m² applied in two layers.

SILICONE PRIMER 1450

Adhesion primer for silicone renders



DESCRIPTION

Ready-to-use primer, based on silicone and acrylic resins, containing quartz aggregates, that promotes adhesion of the silicone-based decorative renders on the substrate. It exhibits excellent adhesion on the substrate.

Produced white or coloured in 260 UV-resistant colour shades according to the **Finoclima** COLOUR PALETTE colour system, thus ensuring the colour uniformity of the decorative finish.

APPLICATIONS

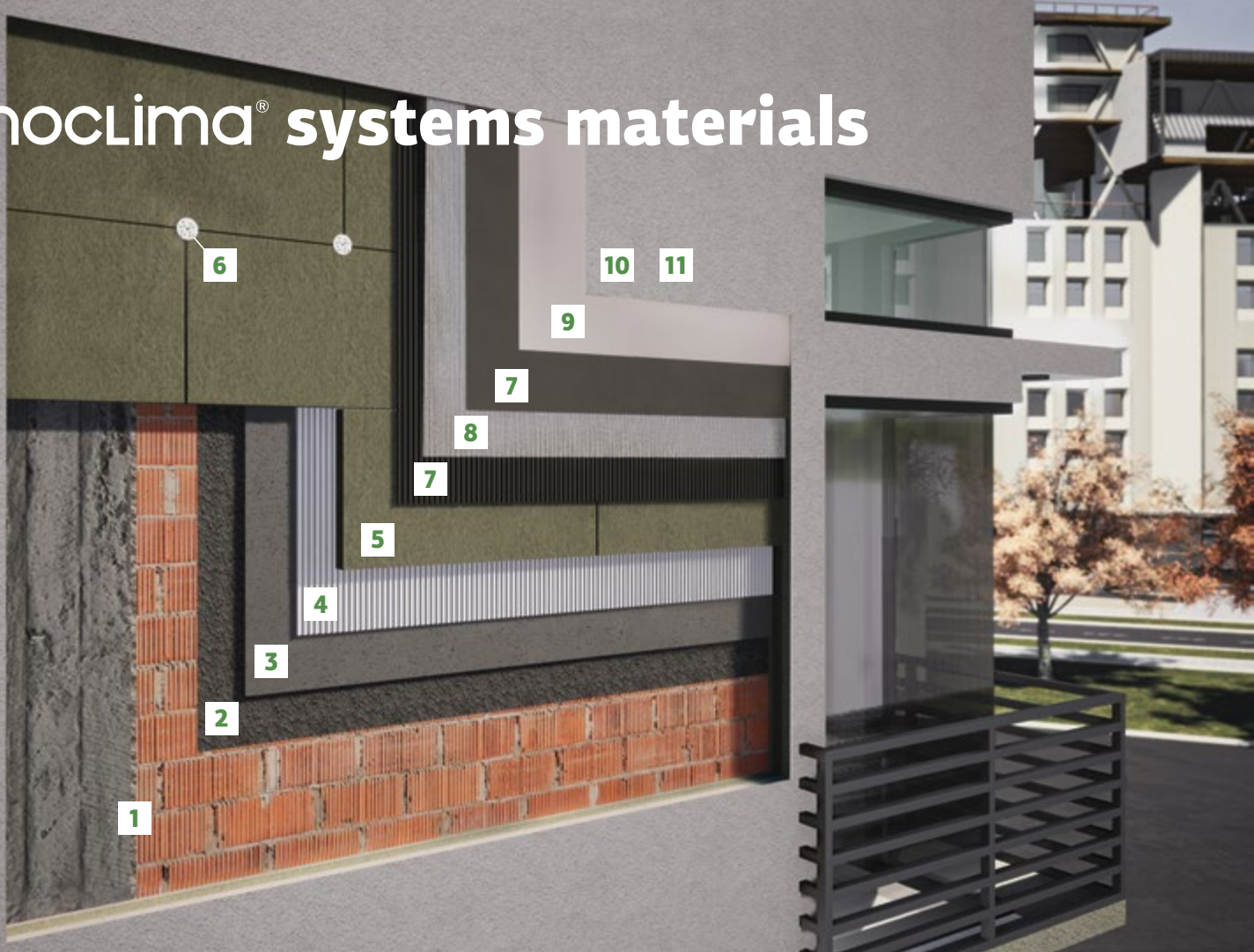
It is used to enhance adhesion of the decorative renders FC 1300•SILICONE and FC 1300 FLEX•ROLL SILICONE of the **Finoclima** certified ETIC systems (ETA 20/0174, ETA 20/0175) on smooth and absorbent substrates, e.g. cement/gypsum boards, render/plaster, fair-faced concrete. Suitable for indoors and outdoors.

PACKAGING	ITEMS/PAL.
5kg plastic container WHITE/ COLOURED	96
20kg plastic container WHITE/ COLOURED	24

CONSUMPTION

Approximately 0.25-0.30 kg/m² depending on the surface's absorbency and roughness.

Finoclima® systems materials



1 SUBSTRATE

Masonry/concrete

2 SP 20

Polymer-modified rough cast render

3 SB 30

Polymer-modified base-coat render

4 FC 1100

Polymer-modified fiber-reinforced adhesive & reinforcing mortar for thermal insulation boards
WHITE / GREY

FC 1100 THERMO•FIX

Coarse-grained polymer-modified fiber-reinforced adhesive & reinforcing mortar for thermal insulation boards - WHITE / GREY

5 clima•ePs INSULATING BOARDS

Certified expanded polystyrene boards, white (W) ή graphite (G).

clima•mw INSULATING BOARDS

Certified mineral wool boards.
Fire classification A1.

6 clima•Fix ANCHORS

Suitable for concrete, masonry and stone.
Available from 7cm to 16cm.
Certified according to ETAG 014.

7 FC 1100

Polymer-modified fiber-reinforced adhesive & reinforcing mortar for thermal insulation boards - WHITE / GREY

FC 1100 THERMO•FIX

Coarse-grained polymer-modified fiber-reinforced adhesive & reinforcing mortar for thermal insulation boards
WHITE / GREY

FC 1100 ORGANIC

Organic, fiber-reinforced, ready-to-use adhesive & reinforcement coating for thermal insulation boards
WHITE

8 clima•net FIBERGLASS MESH

160gr/m², alkali resistant. Certified according to ETAG 004.

9 ACRYLIC PRIMER 1350

Adhesion primer for acrylic renders

SILICONE PRIMER 1450

Adhesion primer for silicone renders

10 FC 1300 ACRYL

Ready-to-use acrylic render

FC 1300 SILICONE

Ready-to-use silicone render

FC 1300 SILOXANE

Ready-to-use acrylic render, siloxane improved

FC 1200

Polymer-modified fiber-reinforced final-coat render

11 FC 1300 FLEX•ROLL SILICONE

Ready-to-use flexible roller-applied silicone render

5.2 auxiliary materials



clima•eps W EPS THERMAL INSULATING BOARDS

Certified white expanded polystyrene boards for the Finoclima® ETIC systems.

CODE	DENSITY (kg/m ³)	THICKNESS (mm)	λ (W/m·K)
EPS 80	15-17	30	0.036
		50	
		60	
		70	
		80	
EPS 100	18-20	30	0.034
		50	
		60	
		70	
		80	



clima•eps G GRAPHITE EPS INSULATING BOARDS

Certified graphite expanded polystyrene boards for the Finoclima® ETIC systems.

CODE	DENSITY (kg/m ³)	THICKNESS (mm)	λ (W/m·K)
EPS 80	≥ 16	30	0.031
		50	
		60	
		70	
		80	
EPS 100	≥ 19	30	0.031
		50	
		60	
		70	
		80	



clima•mw MINERAL WOOL (MW) THERMAL INSULATION BOARDS

Certified mineral wool boards for the Finoclima® ETIC systems. Fire classification A1.

THICKNESS (mm)	λ (W/m·K)
30	0.035
50	
60	
70	
80	



clima•XPS XPS THERMAL INSULATION BOARDS

Certified extruded polystyrene boards for the Finoclima® ETIC systems.

THICKNESS (mm)	λ (W/m·K)	R (m ² ·K/W)
30	0.033	0.882
50		1.176
60		1.471
70	0.034	1.765
80		2.059



clima•net FIBERGLASS MESH

Alkali resistant fiberglass mesh 160gr/m² suitable for the Finoclima® ETIC systems. Certified according to ETAG 004.

WEIGHT	SQUARE OPENING	COLOUR	DIMENSIONS
160 gr/m ²	4x4mm	White	1x50m (50m ²)



clima•FIX ANCHORS WITH PLASTIC PINS

Anchors with plastic pins for the **Finoclima**[®] ETIC systems.
Suitable for concrete, masonry and stone.
Available from 7cm to 16cm, depending on the thickness of the thermal insulation board, the type and quality of the substrate.
Certified according to ETAG 014.

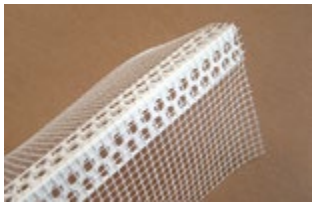
DIMENSIONS (mm)	INSULATION THICKNESS	ITEMS/PACKAGING
60x10x70	50mm	250
60x10x90	70mm	250
60x10x120	90mm	250
60x10x140	110mm	250
60x10x160	120mm	250



PLASTIC DOWEL DISCS (WITHOUT PIN)

Plastic dowel discs for mechanical fastening of the thermal insulation boards of **Finoclima**[®] ETIC systems on drywall surfaces, in combination with the appropriate screws or dowels.
Suitable for fiber boards, cement boards, outdoor plaster boards, sheet metals (panels), OSB, wood, etc.

DIMENSIONS	ITEMS/PACKAGING
Ø 65mm	100



PVC MESH ANGLE BEAD

PVC angle corner bead with alkali resistant fiberglass mesh 150gr/m² for the **Finoclima**[®] ETIC systems.
Certified according to ETAG 004.

MESH WIDTH	MESH SQUARE OPENING	LENGTH	ITEMS/BOX
80x120mm	4x4mm	2.5m	50
100x100mm	4x4mm	2.5m	50
100x150mm	4x4mm	2.5m	50



MESH WATER DRIP PVC PROFILE

Water drip profile with alkali resistant fiberglass mesh 150gr/m², suitable for the **Finoclima**[®] ETIC systems.
Certified according to ETAG 004.

MESH WIDTH	MESH SQUARE OPENING	LENGTH	ITEMS/BOX
100x100mm	4x4mm	2.5m	25



STARTER PROFILE

Perforated aluminum starter profile for the **Finoclima**[®] ETIC systems.

DIMENSIONS (mm)	LENGTH	ITEMS/BOX
40	2.5m	25
50	2.5m	25
60	2.5m	25
70	2.5m	25
80	2.5m	25



PLASTIC MILLING FOR THE SHAPING OF THERMAL INSULATING BOARDS

Plastic milling for the shaping of thermal insulating boards in facade thermal insulation applications.

DIMENSIONS	ITEMS/PACKAGING
Ø 68mm	1



6. decorative mortars



- water repellent coloured plasters
- microcement mortars
- impregnation products & varnishes



6.1 water repellent coloured plasters



SD 60C COLOUR

Coloured polymer-modified decorative final-coat plaster



DESCRIPTION

Coloured, polymer-modified, cement-based final-coat render. It exhibits strong adhesion to the substrate, increased elasticity and significantly reduced water permeability compared to common final-coat renders.

Available in two grain sizes, 1.0mm and 3.5mm (graffiato), depending on the desired aesthetic result.

It is produced in 6 standard colours (see colour chart).

It can be also easily coloured with NATURAL COLOURS pigments in powder form.

Classified as general purpose (GP) mortar type CS II, W1 according to European standard EN 998-1.

PACKAGING	ITEMS/PAL.
25kg paper bag WHITE/ COLOURED	60

CONSUMPTION

Approximately 6-7 kg/m² for a 5mm thick layer.

APPLICATIONS

Used as a coloured, decorative finishing coat on walls after the base-coat render.

Applied with a plastering machine or manually.

Suitable for interior and exterior use.

colour chart of coloured plasters SD 60C COLOUR



Rendering of colours in the chart is only indicative.

6.2 microcement mortars



SD 70 DÉCOR

Microcement decorative mortar for floor & wall applications



DESCRIPTION

Fiber-reinforced, polymer-modified microcement mortar, for creating smooth and durable surfaces, using the traditional surface finishing technique on interior and exterior walls and floors. Exhibits high resistance to abrasion, excellent bonding with the substrate and excellent resistance to moisture.

It is produced in 6 standard colours (see colour chart).

It can also be easily coloured with NATURAL COLOURS pigments in powder form.

Classified as general purpose mortar (GP) type CS IV, W2 according to European standard EN 998-1.

PACKAGING	ITEMS/PAL.
25kg paper bag WHITE/ COLOURED	60

CONSUMPTION

Approximately 1.5-1.6 kg/m² for a 1mm thick layer.

APPLICATIONS

Suitable for creating microcement coatings on walls and floors, and for special constructions such as pools, custom-made bathtubs and washbasins, tables, stairs, etc., adding to constructions the unique aesthetics of Cycladic architecture.

Suitable for indoor and outdoor applications.

colour chart of microcement mortars SD 70 DÉCOR & SD 80 DÉCOR•FLEX



Rendering of colours in the chart is only indicative.

SD 80 DÉCOR•FLEX

Flexible microcement decorative mortar for floor & wall applications



DESCRIPTION

Flexible, fiber-reinforced, polymer-modified microcement mortar, for creating smooth and durable surfaces, using the traditional surface finishing technique on interior and exterior walls and floors. It exhibits high flexibility, as well as high resistance to abrasion, excellent bonding with the substrate and excellent resistance to moisture.

It is produced in 6 standard colours (see colour chart on page 50). It can also be easily coloured with NATURAL COLOURS pigments in powder form.

Classified as class PCC R2 cementitious mortar for non-structural repairs of concrete structures according to European standard EN 1504-3.

PACKAGING	ITEMS/PAL.
25kg paper bag WHITE/ COLOURED	60

CONSUMPTION

Approximately 1.5-1.6 kg/m² for a 1mm thick layer.

APPLICATIONS

Suitable for creating microcement coatings on floors and walls, on concrete substrates, reinforced plaster, gypsum boards, cement boards, old floors (mosaic, natural stone, tiles), as well as for special constructions such as swimming pools, custom-made bathtubs and washbasins, tables, stairs, etc., adding to constructions the unique aesthetics of Cycladic architecture. It is ideal for renovations, restorations and new constructions. Suitable for indoor and outdoor applications.

SD 90 DÉCOR•MICRO FLEX

Elastic microcement mortar for floor & wall applications



DESCRIPTION

Elastic, extra-fine graded, highly-durable microcement mortar, for floor and wall applications.

It exhibits high flexibility, increased mechanical strength and durability, as well as resistance to moisture.

It can be coloured to unlimited tones with NATURAL COLOURS powder colour pigments.

Classified as one-component cementitious product for the protection of concrete structures according to European standard EN 1504-2.

PACKAGING	ITEMS/PAL.
10kg plastic container	40
20kg paper bag	60

CONSUMPTION

Approximately 1.2-1.4 kg/m² for a 1mm thick layer.

APPLICATIONS

Used to create uniform, seamless, durable, decorative microcement coatings on walls and floors, as well as custom-made structures like bathtubs, washbasins, countertops, furnishings, etc.

It is ideal for renovations, restorations and new constructions. Due to its high flexibility it is ideal for surfaces that are subject to intense stresses (movements, vibrations, etc.), e.g. gypsum boards, cement boards, intra-floor heating applications, etc. It can also be applied on old mosaics, tiles or natural stones. Suitable for indoor and outdoor applications.

SD 300

Polymer-modified cementitious mortar for the preparation & finishing of microcement surfaces



DESCRIPTION

Polymer-modified, fiber-reinforced, cement-based mortar. It exhibits high mechanical strength, high abrasion resistance, flexibility and resistance to moisture and frost.

Classified as CT-C30-F9-AR2 type cementitious floor screed material according to European standard EN 13813.

PACKAGING	ITEMS/PAL.
25kg paper bag	60

CONSUMPTION

Approximately 1.5-1.6 kg/m² for a 1mm thick layer.

APPLICATIONS

It is suitable for the preparation and reinforcement of surfaces to be covered with microcement toppings, as well as for the final finish of surfaces providing rustic-microcement aesthetics.

It is applied on any type of substrate, i.e. concrete, render, masonry, cement/gypsum boards, old tiled surfaces, etc. Suitable for indoor and outdoor applications.

NATURAL COLOURS

Natural inorganic pigments in powder form



DESCRIPTION

High quality, natural, inorganic pigments, for colouring of mortars. They provide outstanding colour stability and resistance against UV radiation. Available in 10 bases (black, brick-red, light brown, dark brown, reddish brown, orange, green, blue, ochre and white), which make up the 120 shades of NATURAL COLOUR CREATIONS colour chart.

APPLICATIONS

Ideal for colouring SD 70 DÉCOR, SD 80 DÉCOR•FLEX and SD 90 DÉCOR•MICRO FLEX cementitious mortars, and cementitious plasters SD 60C COLOUR, FC 1200, LK 15 and LK 20. Suitable for use indoors and outdoors.

PACKAGING	ITEMS/BOX
50gr plastic container	96

6.3 impregnation products & varnishes

SIL•PROOF 5050

Silicone-based solution for waterproofing



DESCRIPTION

Ready-to-use, siloxane-based, waterproofing solution with solvents. It penetrates deeply and provides long-lasting water repellency to porous surfaces. It protects from water ingress and thus from mould growth, salt stains and the effects of frost. It doesn't affect the colours of the materials and doesn't form film on the surfaces. Classified as hydrophobic impregnation product (H) for the protection of concrete structures according to European standard EN 1504-2.

APPLICATIONS

Used to waterproof and protect from water ingress porous surfaces such as natural and artificial stones, coloured and unpainted renders, fair-faced concrete, roof tiles, tile joints, decorative bricks, etc. Ideal for the protection of the decorative mortars SD 60 COLOUR and FC 1200, as well as the microcement coatings SD 70 DÉCOR and SD 80 DÉCOR•FLEX.

PACKAGING	ITEMS/PAL.
3lt metal container	132
20lt metal container	33

CONSUMPTION

Approximately 0.2-0.5 lt/m² depending on the surface's absorbency.

SIL•PROOF 5060 NANO

Water-repelling nano-emulsion for the protection of absorbent surfaces



DESCRIPTION

Ready-to-use aqueous emulsion of nano-molecular structure, for the hydrophobic impregnation of porous surfaces indoors and outdoors. It provides the surfaces with a strong and exceptionally durable hydrophobic profile without leaving marks or stains and without affecting their colour and water-vapour transpiration capability. It protects the surfaces from moisture ingress, eliminates efflorescence and increases their resistance to frost. Classified as hydrophobic impregnation product (H) for the protection of concrete structures according to European standard EN 1504-2.

APPLICATIONS

Used in order to provide water repellency on renders, tile grouts, natural and artificial stones, concrete, decorative bricks, masonry, AAC blocks, etc. It doesn't affect the colours of the materials and doesn't form film on the surfaces. Ideal for the protection of the decorative mortars SD 60 COLOUR and FC 1200, as well as the microcement coatings SD 70 DÉCOR and SD 80 DÉCOR•FLEX. Ideal for applications where solvent smells are undesirable.

PACKAGING	ITEMS/BOX	ITEMS/PAL.
1kg plastic container	14	504
5kg plastic container		128
20kg plastic container		39

CONSUMPTION

Approximately 0.10-0.25 kg/m² depending on the surface's absorbency.

SIL•PROOF 5080

Hydrophobic & oleophobic impregnation



DESCRIPTION

Ready-to-use, siloxane-based, aqueous solution, for the protection of porous surfaces against water ingress and oil stains. It imparts long lasting water and oil repellency without affecting the water-vapor permeability and the colour of surfaces. Additionally, it protects materials from water and oil penetration, thus preventing staining from oily dirt and mold growth, while it increases their resistance to frost and eliminates efflorescence. It doesn't contain organic solvents. Classified as hydrophobic impregnation product (H) for the protection of concrete structures according to European standard EN 1504-2.

APPLICATIONS

Used in order to provide water and oil repellency on renders, tile grouts, natural and artificial stones, concrete, decorative bricks, masonry, AAC blocks, etc. It doesn't affect the colours of the materials and doesn't form film on the surfaces. Ideal for applications where solvent smells are undesirable. Ideal for the protection of the decorative mortars SD 60 COLOUR and FC 1200, as well as the microcement coatings SD 70 DÉCOR and SD 80 DÉCOR•FLEX.

PACKAGING	ITEMS/BOX	ITEMS/PAL.
1kg plastic container	14	504
5kg plastic container		128
20kg plastic container		39

CONSUMPTION

Approximately 0.25-0.50 kg/m² depending on the surface's absorbency.

DECODUR ACRYLIC

Acrylic varnish for stone and building materials



DESCRIPTION

Ready-to-use, transparent, solvent-based acrylic impregnating varnish, for the protection of natural stone and other building materials. It exhibits excellent UV resistance, very strong adhesion and penetrating ability strengthening the structure of the materials while at the same time sealing and brightening-up their natural colour giving a slightly glossy appearance. It doesn't peel off nor yellow over time providing long lasting protection from water, pollution and wear.

APPLICATIONS

It is suitable for the impregnation and protection of natural stone, stamped concrete, microcement mortars, decorative bricks, roof tiles, etc. Suitable for walls and floors, indoors and outdoors.

PACKAGING	ITEMS/BOX	ITEMS/PAL.
1lt metal container	8	288
5lt metal container		115
20lt metal container		33

CONSUMPTION

Approximately 0.10-0.20 lt/m² depending on the surface's absorbency.

DECODUR COAT•PU 2K•W MAT

Two-component aliphatic polyurethane water-based varnish with matte finish



DESCRIPTION

Two-component, water-based, aliphatic polyurethane varnish, with a matte finish. It exhibits high UV resistance (does not turn yellowish) due to UV filters it contains, and high mechanical strength. It significantly increases wear resistance of microcement coatings, while it protects from oil stains, water ingress and dirt. Dilute 20% with water.

APPLICATIONS

Used for the protection of microcement surfaces, surfaces made of stone, wood and industrial cementitious floors mildly stressed. Ideal for applications where solvent smells are undesirable.

PACKAGING	ITEMS/BOX
1kg (A+B)	8
3kg (A+B)	

CONSUMPTION

0.05-0.10 kg/m² per layer.

DECODUR COAT•PU 2K GLOSS

Two-component aliphatic polyurethane varnish with gloss finish



DESCRIPTION

Two-component, solvent-based, aliphatic polyurethane varnish, with a glossy finish. It exhibits high UV resistance (does not turn yellowish) due to UV filters it contains, and high mechanical strength. It significantly increases wear resistance of microcement coatings, while it protects from oil stains, water ingress and dirt. Dilute 10-15% with PU•SOLVENT.

APPLICATIONS

Used for the protection of microcement surfaces, surfaces made of concrete, natural and artificial stone, wood, metal, polyester, epoxy and industrial floors, etc. Ideal for coastal areas and as protective coating over swimming pools epoxy paints, enhancing their resistance against UV radiation.

PACKAGING	ITEMS/BOX
1kg (A+B)	8
4kg (A+B)	

CONSUMPTION

0.05-0.10 kg/m² per layer.

DECODUR COAT•PU 2K MAT

Two-component aliphatic polyurethane varnish with matte finish



DESCRIPTION

Two-component, solvent-based, aliphatic polyurethane varnish, with a matte finish. It exhibits high UV resistance (does not turn yellowish) due to UV filters it contains, and high mechanical strength. It significantly increases wear resistance of microcement coatings, while it protects from oil stains, water ingress and dirt. Dilute 20% with PU•SOLVENT.

APPLICATIONS

Used for the protection of microcement surfaces, surfaces made of concrete, natural and artificial stone, wood, metal, polyester, epoxy and industrial floors, etc.

PACKAGING	ITEMS/BOX
1kg (A+B)	8
4kg (A+B)	

CONSUMPTION

0.05-0.10 kg/m² per layer.

PU•SOLVENT

Thinner for polyurethane varnishes



DESCRIPTION

Solvent for the polyurethane PU varnishes DECODUR COAT•PU 2K GLOSS and DECODUR COAT•PU 2K MAT.

APPLICATIONS

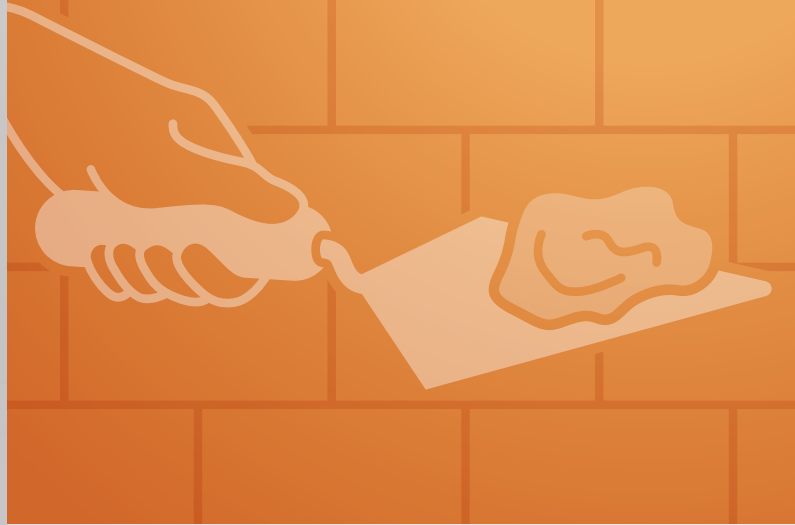
It is added in polyurethane-based varnishes DECODUR COAT•PU 2K GLOSS and DECODUR COAT•PU 2K MAT, as well as for the cleaning of surfaces and tools after application.

PACKAGING	ITEMS/BOX
1lt metal container	8

CONSUMPTION

- 10-20% dilution of DECODUR COAT•PU 2K GLOSS.
- 20% dilution of DECODUR COAT•PU 2K MAT.

7. building mortars & premixed renders



- building mortars
- premixed renders
- auxiliary materials



7.1 building mortars



LK 10

Masonry mortar
grey



DESCRIPTION

Premixed, cement-based masonry mortar, used for building various types of building materials. Classified as general purpose (GP) masonry mortar type M5, A1, according to the European standard EN 998-2.

APPLICATIONS

Used for building of various types of building materials such as bricks, thermal-insulating bricks, blocks, natural stone, etc. Can also be used for minor repair works. Suitable for indoor and outdoor applications.

PACKAGING	ITEMS/BOX	ITEMS/PAL.
5kg plastic bag	4	144
30kg paper bag		48

CONSUMPTION

Approximately 16-18 kg/m² of masonry, for bricks of dimensions 60x90x190 cm.

LK 15

Polymer-modified stone & marble mortar
white



DESCRIPTION

Cement-based, polymer-modified masonry mortar, suitable for building masonry and laying surfaces with natural stones and marbles. It is produced in white colour and can be easily coloured with NATURAL COLOURS pigments in powder form. Classified as M10 type mortar according to European standard EN 998-2.

APPLICATIONS

Used for the building of natural stones, as well as laying marble and other natural stones on floors, stairs, marble sills, etc. Can also be used for minor repair works. Suitable for indoor and outdoor applications.

PACKAGING	ITEMS/PAL.
30kg paper bag	48

CONSUMPTION

Approximately 16-18 kg/m² for a 1cm thick layer.

LK 20

Polymer-modified cementitious mortar for grouting of stone masonry
white



DESCRIPTION

Cement-based, polymer-modified mortar, for building and grouting natural stones. It can be easily coloured with NATURAL COLOURS pigments in powder form. Classified as masonry mortar class M20 according to the European standard EN 998-2, and as grouting mortar class CG2 according to the European standard EN 13888.

APPLICATIONS

Used for building and grouting natural stones with joint widths 5-50mm. Suitable for walls and floors, indoors and outdoors.

PACKAGING	ITEMS/PAL.
25kg paper bag	60

CONSUMPTION

Consumption depends on the dimensions of the stone, the width and thickness of the joint.

LK 30

Coloured fiber-reinforced cementitious mortar for roof tiles



DESCRIPTION

Polymer-modified, fiber-reinforced, cement-based mortar, for the installation of roof tiles. Classified as M20 type mortar according to European standard EN 998-2. Available in 4 colours: white, brick-red, ochre and grey.

APPLICATIONS

Ideal for the safe adhesion of ridges, gables, as well as for repairing and sealing gaps in all types of roof tiles. Suitable for building and grouting natural stones or other structural materials, as well as for minor repair works.

PACKAGING	ITEMS/PAL.
30kg paper bag	48

CONSUMPTION

Approximately 15 kg/m² for a 1cm thick layer.

LK 40

Adhesive mortar
for thermal-insulating bricks



DESCRIPTION

Cement-based, fiber-reinforced, thin-layer masonry mortar, for the installation of thermal-insulating bricks or any other type of bricks. It exhibits high initial and final adhesion strength, and excellent workability.

Classified as a M10 - A1 type masonry mortar according to European standard EN 998-2.

APPLICATIONS

For the construction of masonry using the thin-bed masonry method with accurately dimensioned and/or inter-lockable masonry units (e.g. thermal-insulating bricks). Suitable for indoor and outdoor applications.

PACKAGING	ITEMS/PAL.
25kg paper bag	60

CONSUMPTION

Depends on the application and the type of bricks. Indicatively, for bricks of 25cm in width, a 25kg bag yields about 3.5-4.5 m².

BET C20/25

Premixed dry concrete
type C20/25-XC1



DESCRIPTION

Pre-blended mixture of cement and aggregates (max. grain size 8mm) requiring only the addition of water to produce concrete of compressive strength class C20/25. It exhibits high mechanical strengths, volume stability and excellent workability. Classified as concrete of exposure class XC1 and compressive strength class C20/25 according to the Greek Concrete Technology Regulation (CTR) 2016 and the European standard EN 206.

APPLICATIONS

Used for the construction of concrete wall beams, in minor repairing works, as well as for sidewalks, curbs, steps, ramps, walkways, patios, floor slabs and any other construction work that demands concrete of similar exposure and compressive strength classification.

PACKAGING	ITEMS/PAL.
30kg paper bag	48

CONSUMPTION

1,000kg of dry concrete-mix yield about 0.5m³ of concrete mix.

ANTI-LIME POWDER

Mortar plasticizer
in powder form



DESCRIPTION

Plasticizing agent in powder form which can completely replace lime in cementitious mortars, significantly improving their workability and final strength, and increasing their productivity. It doesn't contain corrosive ingredients for metals and doesn't cause skin burns.

APPLICATIONS

Used for the preparation of renders, as well as masonry and paving mortars, giving them the plasticity of lime-cement mortars, either applied by hand or a pumping machine.

PACKAGING	ITEMS/PAL.
30kg paper bag	40

CONSUMPTION

Approximately 5-10kg / 40kg of cement.

FINO-CARB 100

Calcium carbonate filler



DESCRIPTION

Fine natural calcium carbonate powder of high whiteness.

APPLICATIONS

- FINO-CARB is used:
- For coverage of glass greenhouses
 - For coverage of roofs
 - As a mineral filling material for polyester or other resins.

PACKAGING	ITEMS/PAL.
30kg paper bag	40

CONSUMPTION

Depending on the application.

7.2 premixed renders



SP 20

Polymer-modified
rough cast render



DESCRIPTION

Cement-based render, modified with polymers and other special admixtures, for the preparation of the surfaces to be rendered. It exhibits high mechanical strengths, strong adhesion to the substrate and excellent workability either when applied with a pumping machine or by hand. Classified as general purpose (GP) mortar type CS IV, W1 according to the European standard EN 998-1.

APPLICATIONS

Used to create a strong, rough layer on the surfaces that are going to be rendered.

It is applied before base-coat render or one-coat render producing a strong layer with increased adhesion strength on the building elements that provides the ideal substrate for the subsequent render layers to be applied.

Can also be used for minor repair works.

It is suitable for indoor and outdoor applications.

PACKAGING	ITEMS/PAL.
30kg paper bag	48

CONSUMPTION

Approximately 6-7 kg/m²
for a 5mm thick layer.

SB 30

Polymer-modified
base-coat render



DESCRIPTION

Cement-based render, modified with polymers and other special admixtures, used to create the base coat of render. It exhibits high mechanical strengths, strong adhesion to the substrate and excellent workability either when applied with a pumping machine or by hand. Classified as general purpose (GP) mortar type CS II, W0 according to the European standard EN 998-1.

APPLICATIONS

Applied after the rough cast render (SP 20) in order to level the wall surface prior to the application of the final-coat render (ST 40) or other wall coverings, e.g. ceramic tiles, decorative microcement coatings, etc.

Can also be used for minor repair works.

It is suitable for indoor and outdoor applications.

PACKAGING	ITEMS/PAL.
30kg paper bag	48

CONSUMPTION

Approximately 15 kg/m²
for a 10mm thick layer.

FINO SUPERPLAST

Extra-strength fiber-reinforced
fine-grained polymer-modified
finish-coat render

grey



DESCRIPTION

Polymer-modified, fine-grained cementitious mortar, reinforced with synthetic micro-fiber, ideally used as finish-coat render. It exhibits strong adhesion to the substrate, high mechanical strengths, enhanced water repellence, ease of application and excellent finishing.

It is classified as general purpose (GP) rendering mortar type CS III, W1 according to the European standard EN 998-1.

APPLICATIONS

Used as final-coat render in situations that demand extra-fine finished texture and enhanced durability.

Suitable for indoors and outdoors, on surfaces like:

- Base-coat renders.
- Cement-blocks, AAC blocks or other type of lightweight blocks, thermal-insulating or regular bricks, etc.
- Fair-faced or typical concrete structures.
- Rough plaster surfaces (sprints, graffiato, etc.) that need to become even.

PACKAGING	ITEMS/PAL.
25kg paper bag	60

CONSUMPTION

Approximately 1.3-1.4 kg/m²
for a 1mm thick layer.

ST 40

Polymer-modified
final-coat render
white



DESCRIPTION

Cement-based render, modified with polymers and other special admixtures, used for the smooth finishing of the wall surfaces. It exhibits high mechanical strengths, strong adhesion to the substrate, reduced water permeability of the final surface and excellent workability either when applied with a pumping machine or by hand.

Classified as general purpose (GP) mortar type CS II, W1 according to the European standard EN 998-1.

APPLICATIONS

Applied after the base-coat render (SB 30) in order to produce a smooth final surface ready to be painted.

Can also be used for minor repair works.

It is suitable for indoor and outdoor applications.

PACKAGING	ITEMS/PAL.
30kg paper bag	48

CONSUMPTION

Approximately 6-7 kg/m²
for a 5mm thick layer.

ST 45 FINE

Fine-grained, water repellent
polymer-modified
final-coat render
white



NEW

DESCRIPTION

Cement-based mortar, modified with polymers and other special admixtures, used for the smooth finishing of the wall surfaces. It exhibits high water repellency and mechanical strengths, strong adhesion to the substrate, reduced water permeability of the final surface and excellent workability, either when applied with a pumping machine or by hand.

Classified as general purpose (GP) mortar type CS II, W1 according to the European standard EN 998-1.

APPLICATIONS

Applied after the base-coat render (SB 30) it produces an exceptionally smooth, crack-free final surface ready to be painted.

It is suitable for indoor and outdoor applications.

PACKAGING	ITEMS/PAL.
30kg paper bag	48

CONSUMPTION

Approximately 5-6 kg/m²
for a 3-4mm thick layer.

SM 50

Polymer-modified
one-coat render
white



DESCRIPTION

Cement-based, one-coat render, modified with polymers and other special admixtures, used instead of the base-coat and the final-coat render producing a level and smooth final surface. It exhibits high mechanical strengths, strong adhesion to the substrate, reduced water permeability of the final surface and excellent workability either when applied with a pumping machine or by hand.

SM 50 is classified as one-coat (OC) mortar type CS III, W1 according to the European standard EN 998-1.

APPLICATIONS

Applied after the rough cast render (SP 20), it replaces the base-coat (SB 30) and final-coat render (ST 40 or ST 45 FINE).

It enables the application of the thickness required for the levelling of the masonry without sagging, while it produces a smooth final surface without cracks ready to be painted.

Can also be used for minor repair works.

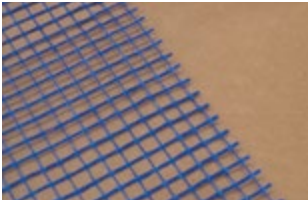
It is suitable for indoor and outdoor applications.

PACKAGING	ITEMS/PAL.
30kg paper bag	48

CONSUMPTION

Approximately 14-15 kg/m²
for a 10mm thick layer.

7.3 auxiliary materials



PLASTER REINFORCEMENT FIBERGLASS MESH

Alkali resistant fiberglass mesh, for the reinforcement of base-coat renders and cementitious mortars, in order to avoid cracking.

WEIGHT	SQUARE OPENING	COLOUR	DIMENSIONS
110 gr/m ²	10x10 mm	Blue	1x50m (50m ²)



POLYPROPYLENE FIBERS

Alkali resistant, polypropylene fibers with high dispersion capability, for the reinforcement of ready-mixed concrete, renders and floor screeds, preventing shrinkage-cracking.

SIZE	CONSUMPTION	PACKAGING	ITEMS/BOX
3mm 6mm 12mm	900-1200 gr/m ³	900 gr/item	27



PVC CORNER BEAD

Plastic corner bead (PVC) in white colour, for supporting masonry corners, in rendering and plastering works. High resistance to weather conditions and ageing.

TYPE	DIMENSIONS	LENGTH	ITEMS/BOX
PVC	40x40x6mm	3m	75

8. primers



8. primers



FINO•CONTACT

Adhesion promoting primer with quartz aggregates



DESCRIPTION

Adhesion promoting primer, based on acrylic resins, selected quartz aggregates and special additives. It exhibits excellent bonding with any kind of substrate providing a rough alkaline-resistant final surface.

APPLICATIONS

It is applied on smooth, absorbent or non-absorbent substrates such as gypsum boards, ceramic tiles, marble, fair-faced concrete, polystyrene, etc. The application of FINO•CONTACT creates a rough, alkaline-resistant surface which significantly increases the adhesion of cement, lime or gypsum based mortars on it. Indicatively, it can be used before applying renders, plasters, tile adhesives, microcement mortars, self-levelling cement mortars, etc. Suitable for indoor and outdoor applications.

PACKAGING	ITEMS/PAL.
5kg plastic container	96
20kg plastic container	24

CONSUMPTION

Approximately 0.3-0.4 kg/m² depending on the substrate's type.

ACRYLIC PRIMER

Water-based acrylic deep-penetrating primer



DESCRIPTION

Aqueous dispersion of acrylic resins which, due to the very small size of their particles, achieve exceptionally high penetration in porous surfaces, thus stabilizing them and enabling the proper adhesion on them. Contains no organic solvents. Low VOC content in conformity to the Directive 2004/42/EC.

APPLICATIONS

Ready-to-use primer, used in order to ensure the adhesion of waterproofing elastomers (cementitious, acrylic, hybrid), acrylic plasters, as well as water-thinnable paints. It is applied on brittle substrates, e.g. old concrete, render, AAC blocks, gypsum/cement boards, stabilizing them and ensuring the proper adhesion of subsequent layers.

PACKAGING	ITEMS/BOX	ITEMS/PAL.
1kg plastic container	14	504
5kg plastic container		128
20kg plastic container		39

CONSUMPTION

Approximately 0.1-0.2 kg/m² depending on the surface's absorbency.

PRIMER FP•31

Water-based acrylic primer for sealing cementitious substrates



DESCRIPTION

Acrylic primer in water dispersion, for stabilizing and sealing cementitious substrates prior to the application of self-levelling compounds (FLOW 1•10 RAPID, FLOW 3•30 ECO•RAPID, FLOW 5•50 RAPID) and levelling floor screeds. It penetrates deeply in the substrate while at the same time it seals the surface. It improves adhesion mortar and substrate while significantly reduces the formation of bubbles in the levelling compounds. It shows very low emission of Volatile Organic Compounds (VOC).

APPLICATIONS

It is used for the stabilization and sealing of cementitious substrates prior the application of self-levelling compounds, industrial floors and levelling floor screeds.

PACKAGING	ITEMS/PAL.
5kg plastic container	128
20kg plastic container	39

CONSUMPTION

Approximately 0.1-0.2 kg/m² depending on the dilution rate and the surface's absorbency.

EPOXY•PRIMER

Water-based epoxy primer
for non-absorbent surfaces



DESCRIPTION

Clear, epoxy based, two-component primer, without solvents. Exhibits high penetrability, increased hardness and resistance to water, acids and alkalis.

APPLICATIONS

Used as primer for the polyurethane sealant HYDROFLEX•PU on non-absorbent surfaces. Applied on surfaces such as aluminium, steel, asphalt, glass, ceramic tiles, old acrylic membranes, etc. Used as primer on concrete surfaces with increased residual moisture.

PACKAGING

4kg (A+B)

20kg (A+B)

CONSUMPTION

Approximately 0.1-0.2 kg/m² in one or two layers.

HYDRO•PRIMER

Primer for the acrylic brushable
elastomeric waterproofing
roof-coating



DESCRIPTION

Aqueous dispersion of micro-molecular acrylic polymers with enhanced substrate-penetrating properties which, when applied to porous substrates, creates the appropriate conditions for the adhesion of the elastomeric waterproofing coatings HYDROFLEX•ACRYL and HYDROFLEX HYBRID•PU.

APPLICATIONS

Ready-to-use primer that penetrates deep into the substrate, decreasing its absorbency and increasing its cohesion. It also operates as a binding layer between the substrate and the elastomeric waterproofing coatings HYDROFLEX•ACRYL and HYDROFLEX HYBRID•PU. Applied on surfaces such as concrete, plaster, gypsum boards, cement boards, etc.

PACKAGING

5kg
plastic container

96

20kg
plastic container

24

CONSUMPTION

Approximately 0.1-0.2 kg/m² depending on the surface's absorbency.

PU•PRIMER

Polyurethane primer
for absorbent surfaces



DESCRIPTION

One-component, clear, solvent-based polyurethane primer which, when applied to porous substrates, creates the appropriate conditions for the adhesion of the brushable polyurethane waterproofing membrane HYDROFLEX•PU.

APPLICATIONS

Ready-to-use primer that penetrates deep into the substrate, decreasing its absorbency and increasing its cohesion. It also acts as a binding layer between the substrate and the polyurethane waterproofing membrane HYDROFLEX•PU. Applied on surfaces such as concrete, plaster, wood, etc.

PACKAGING

5kg
metal container

120

17kg
metal container

33

CONSUMPTION

Approximately 0.20-0.25 kg/m² in one layer.

FIX PRIMER•PU

One-component polyurethane primer



DESCRIPTION

One-component, polyurethane primer to promote adhesion of elastomeric sealants or adhesives (PU•FIX) on porous substrates.

APPLICATIONS

It is used on substrates like concrete, light-weight concrete, masonry, natural stones, wood, etc., in order to promote the adhesion of elastomeric sealants or adhesives on them (PU•FIX).

PACKAGING	ITEMS/PAL.
0.50kg metal container	12

CONSUMPTION

Indicatively: 1kg of primer is enough for approximately 60m of joint.

EQ•PRIMER 5200

Plaster primer for equalizing the substrate's absorbance



DESCRIPTION

Water-based acrylic plaster primer, used to regulate the absorbency of surfaces prior to the application of renders.

It makes the substrate partially hydrophobic and thus ensures that the render will not be dehydrated. Contains no organic solvents.

APPLICATIONS

It is applied before the application of the decorative final-coat render SD 60C COLOUR in order to ensure colour uniformity.

Additionally, on very absorbent substrates such as AAC blocks, cement-blocks, etc., in order to prevent the dehydration of the renders to be applied.

PACKAGING	ITEMS/BOX	ITEMS/PAL.
1kg plastic container	14	504
5kg plastic container		128
20kg plastic container		39

CONSUMPTION

Approximately 0.10 kg/m² depending on the surface's absorbency.



9. mortar & concrete improvers



SBR POWER•LATEX

High performance polymer admixture for cement-mortars



DESCRIPTION

Concentrated (47% of active ingredients) emulsion of synthetic polymers, for the improvement of the properties of cement-based mortars. It significantly improves adhesion, watertightness, elasticity, surface hardness and chemical resistance of mortars, while at the same time minimizes drying shrinkage and thus the danger of cracking, and improves workability. SBR POWER•LATEX is APEO and ammonia free in conformity with REACH regulation. It has low content in Volatile Organic Compounds (VOC) in conformity with the Directive 2004/42/EC.

APPLICATIONS

Used as an admixture, replacing part of the water required for mixing of cement-based mortars. Ideal for the preparation of renders with increased mechanical properties, as well as increased water resistance, for cement mortars with increased water impermeability and abrasion resistance, as a bonding layer between old and new concrete or mortar, for the preparation of concrete repairing mortars, the improvement of cementitious adhesives and grouts, etc.

PACKAGING	ITEMS/BOX	ITEMS/PAL.
1kg plastic container	14	504
5kg plastic container		128
20kg plastic container		39

CONSUMPTION

Indicatively: 5-10% of the cement weight, depending on the application.

LATEX

Enhancing resin for mortars



DESCRIPTION

Synthetic aqueous dispersion based on styrene-butadiene elastomer, with 30% active ingredients, for multiple improvements of the properties of cement-based mortars. LATEX is APEO and ammonia free in conformity with REACH regulation. It has low content in Volatile Organic Compounds (VOC) in conformity with the Directive 2004/42/EC.

APPLICATIONS

Used as an admixture, replacing part of the water required for mixing cementitious mortars (traditional or premixed), significantly improving their properties. Suitable for masonry mortars, renders, floor-levelling screeds, tile adhesives and grouts. It significantly improves their workability, adhesion strength, watertightness and surface hardness.

PACKAGING	ITEMS/BOX	ITEMS/PAL.
1kg plastic container	14	504
5kg plastic container		128
20kg plastic container		39

CONSUMPTION

Depending on the application.

ECO•LATEX

Enhancing polymer resin for mortars



DESCRIPTION

Synthetic polymer emulsion, for the improvement of properties of cement-based mortars. Its composition based on ammonia-free and APEO (Alkyphenol ethoxylates)-free synthetic resins makes ECO•LATEX totally friendly towards environment. It has low content in Volatile Organic Compounds (VOC) in conformity with the Directive 2004/42/EC.

APPLICATIONS

Used as an admixture, replacing part of the water required for mixing cement mortars (traditional or premixed), improving their properties. Suitable for masonry mortars, renders and floor-levelling screeds. It improves their workability, adhesion strength, watertightness and surface hardness.

PACKAGING	ITEMS/BOX	ITEMS/PAL.
1kg plastic container	14	504
5kg plastic container		128
20kg plastic container		39

CONSUMPTION

Depending on the application.

FINOFLEX

Elastifying admixture for mortars



DESCRIPTION

Aqueous dispersion based on acrylic resins (35% active ingredients), ideal for increasing elasticity in cement-based brushable sealing mortars, tile adhesives and other cementitious mortars. FINOFLEX is APEO and ammonia free in conformity with REACH regulation. It has low content in Volatile Organic Compounds (VOC) in conformity with the Directive 2004/42/EC.

APPLICATIONS

Used as an admixture, replacing part or completely the mixing water of the cement-based mortars. It is ideal for elasticizing rigid waterproofing mortars and tile adhesives, as well as tile grouts and wall putties. It significantly improves their flexibility, adhesion strength and watertightness.

PACKAGING	ITEMS/BOX	ITEMS/PAL.
1kg plastic container	14	504
5kg plastic container		128
20kg plastic container		39

CONSUMPTION

Mixing ratio FINOFLEX:water from 1:1 up to complete replacement of mixing water, depending on the product and the desirable plasticizing degree.

PLASTOLIT

Liquid mortar plasticizer - replaces lime



DESCRIPTION

Liquid plasticizer that significantly improves workability of cementitious mortars. Fully replaces lime.

APPLICATIONS

Used for masonry mortars, as well as base-coat and final-coat renders, applied manually or with pumping machine. It significantly improves workability and mechanical strengths.

PACKAGING	ITEMS/BOX	ITEMS/PAL.
1kg plastic container	14	504
5kg plastic container		128
20kg plastic container		39

CONSUMPTION

- 160gr / 40kg of cement in masonry mortars.
- 240gr / 40kg of cement in plasters.

FINOLIT

Liquid plasticizing admixture for mortars - replaces lime



DESCRIPTION

Liquid plasticizer and air-entraining admixture that significantly improves the workability of cement mortars, fully replacing lime.

APPLICATIONS

Used for masonry mortars, as well as base-coat and final-coat renders, applied manually or with pumping machine. It significantly improves workability and mechanical strengths.

PACKAGING	ITEMS/BOX	ITEMS/PAL.
1kg plastic container	14	504
5kg plastic container		128
20kg plastic container		39

CONSUMPTION

- 80gr / 40kg of cement in masonry mortars.
- 120gr / 40kg of cement in plasters.

AD•PROOF

Waterproofing admixture for mortars & concrete



DESCRIPTION

Liquid waterproofing admixture for mortars and concrete, that significantly reduces water permeability and thus increasing the lifespan of the constructions. Classified as water reducing / plasticizing admixture and water resisting admixture for the reduction of capillary absorption according to European standard EN 934-2 Table 2 and Table 9.

APPLICATIONS

It is used generally in ready-mixed concrete constructions to produce high quality watertight concrete. Ideal for water retaining structures, swimming pools, below ground structures, tunnels, etc.

PACKAGING	ITEMS/PAL.
5kg plastic container	128
20kg plastic container	39

CONSUMPTION

0.5% of the cement weight.

AD•SPL/A•G

High range
concrete superplasticizer



DESCRIPTION

New generation high range water reducer and superplasticizer for concrete. It is compatible with all the cement types and provides high water reduction, increased concrete strength, improved plasticity and pumpability of the concrete mix, and reduced shrinkage. Classified as high range water reducing /superplasticizing admixture according to European standard EN 934-2 Tables 3.1-3.2.

APPLICATIONS

Broad-range superplasticizer suitable for site-batched and ready-mix concrete. It produces mixtures less sensitive towards differentiations of aggregates and different cement types.

PACKAGING	ITEMS/PAL.
-----------	------------

20kg plastic container	39
---------------------------	----

CONSUMPTION

0.5-2.0% of the cement weight.

AD•SPL/F

High performance
concrete superplasticizer



DESCRIPTION

Powerful superplasticizer based on 3rd generation of polycarboxylate polymer technology. It provides exceptional water reduction in the concrete mix and prolonged maintenance even under high temperatures. Classified as high range water reducing /superplasticizing admixture and set retarding /high range water reducing /superplasticizing admixture according to European standard EN 934-2 Tables 3.1-3.2 and Tables 11.1-11.2.

APPLICATIONS

Especially suitable for site-batched and ready-mix concrete producing plastic and easy-to-handle concrete mixes with better casting and compaction properties. Ideal for concrete of high specifications with increased demands for water reduction and prolonged workability. Suitable for high distance concrete transportations and under high temperatures. Suitable for shotcrete.

PACKAGING	ITEMS/PAL.
-----------	------------

20kg plastic container	39
---------------------------	----

CONSUMPTION

0.4-1.6% of the cement weight.

FINOCURE•W

Paraffin-based
concrete curing compound



DESCRIPTION

Paraffin-based aqueous emulsion, suitable for the protection of fresh concrete from premature drying due to quick evaporation of mixing water.

APPLICATIONS

Especially suitable for large concrete surfaces exposed to direct sunlight and under rapid drying conditions caused by wind, low humidity or high ambient temperatures. Indicatively, it is used in the following cases: concrete slabs, industrial floors (after the application of the industrial floor surface hardener HT 250 HARD TOP), airport pavements.

PACKAGING	ITEMS/PAL.
-----------	------------

20kg plastic container	39
---------------------------	----

CONSUMPTION

0.15-0.25 kg/m².

FINOCURE•AC

Acrylic-based
concrete curing compound



DESCRIPTION

Aqueous emulsion based on acrylic polymers, suitable for the protection of fresh concrete from premature drying due to quick evaporation of mixing water.

APPLICATIONS

Especially suitable for large concrete surfaces exposed to direct sunlight and under rapid drying conditions caused by wind, low humidity or high ambient temperatures. Indicatively, it is used in the following cases: concrete slabs, industrial floors (after the application of the industrial floor surface hardener HT 250 HARD TOP), airport pavements. It is also used to stabilize and seal existing concrete floors and screeds.

PACKAGING	ITEMS/PAL.
-----------	------------

20kg plastic container	39
---------------------------	----

CONSUMPTION

0.15-0.25 kg/m².

10. cleaners



- **Fresh**
for domestic use
- **ProClean**
for professional use



10.1 Fresh (for domestic use)



F10

General purpose cleaner



DESCRIPTION

Powerful general purpose cleaner with special balanced formula, ideal for cleaning your home or workplace. Suitable for every surface like floors, stainless steel countertops, tables, etc., without rinsing. It also contains anti-marks additives.

APPLICATIONS

Ideal for surfaces such as ceramic tiles, granites, sanitary utensils, countertops, etc. It has a strong cleaning action against fat, tartar, salt, wine, coffee, oil, etc., without affecting sensitive surfaces thanks to its neutral pH, while leaving a long lasting scent of freshness.

PACKAGING	ITEMS/BOX	ITEMS/PAL.
750ml trigger sprayer	16	576
1lt plastic container	14	504
5lt plastic container		128
20lt plastic container		39

CONSUMPTION

Approximately 1lt / 12-15m².

F20

Anti-mould cleaner



DESCRIPTION

Powerful cleaner dedicated against mould. The special formula eliminates fungi, moss and algae, while consolidating surfaces (internal and external).

APPLICATIONS

Ideal for areas with intense humidity (bathrooms, kitchens, storage rooms, cellars, etc.) and surfaces on which water vapor condenses (bathtubs, showers, sinks and ceilings without insulation). In addition, it is suitable for cleaning fences and sidewalks that have mould, algae, moss and soot.

PACKAGING	ITEMS/BOX	ITEMS/PAL.
750ml trigger sprayer	16	576
1lt plastic container	14	504
5lt plastic container		128
20lt plastic container		39

CONSUMPTION

Approximately 1lt / 12-15m².

F30

Salt cleaner



DESCRIPTION

Mild descaler based on citric acid. The special formula combines excellent cleaning performance while it inhibits the deposition of calcium salts.

APPLICATIONS

Ideal daily washroom cleaner, especially in hard water areas. Suitable for removing salt, rust, cement residues, etc. from delicate surfaces such as taps, chrome and stainless steel fixtures, copper, brass, aluminum, ceramic, etc., without the risk of corrosion. Cleans without scratching and leaves a pleasant long-lasting scent.

PACKAGING	ITEMS/BOX	ITEMS/PAL.
750ml trigger sprayer	16	576
1lt plastic container	14	504
5lt plastic container		128
20lt plastic container		39

CONSUMPTION

Approximately 1lt / 12-15m².

10.2 ProClean (for professional use)



P10

Acidic tile grout cleaner



DESCRIPTION

Powerful cleaner for tile grouts and cementitious residues in general. The special formula quickly dissolves and removes residues of tile grouts, tile adhesives, plasters and other cementitious materials.

APPLICATIONS

Used for cleaning cementitious residues from ceramic tiles and tools, biofouling from submerged parts of ships, salt and rust depositions from cooling circuits, heat exchangers, closed circuits with water, etc. Thanks to the presence of corrosion inhibitors, it is applicable in every situation (except from aluminum alloys).

PACKAGING	ITEMS/BOX	ITEMS/PAL.
1lt plastic container	14	504
5lt plastic container		128
20lt plastic container		39

CONSUMPTION

Approximately 1lt / 15-20m².

P20

Natural stone cleaner



DESCRIPTION

Mild acidic cleaner for natural stones, mosaics and unpolished marbles. The special formula cleans deeply stains of rust, soil, oil, coffee and cementitious residues, restoring the initial vibrancy in the colours of natural stones.

APPLICATIONS

Used for cleaning walls and floors clad with natural stones, marbles and mosaics, for restoring surfaces and removing stains that have been created over time.

PACKAGING	ITEMS/BOX	ITEMS/PAL.
1lt plastic container	14	504
5lt plastic container		128
20lt plastic container		39

CONSUMPTION

Approximately 1lt / 4-5m².

P30

Marble & granite cleaner



DESCRIPTION

Powerful cleaner of polished marbles and natural stones. It doesn't harm the shine of the marbles as it is not acidic, while it penetrates deeply breaking down stains and restoring the initial vibrancy in the colours of the natural stones. Biodegradable by more than 90%.

APPLICATIONS

Used for cleaning stains of coffee, wine, oil, soot, nicotine, soil, ink, etc. from marble, natural stone and granite surfaces. The special formula doesn't contain acids, thus it is not harmful for the surfaces.

PACKAGING	ITEMS/BOX	ITEMS/PAL.
1lt plastic container	14	504
5lt plastic container		128
20lt plastic container		39

CONSUMPTION

Approximately 1lt / 12-15m².

P40

Graffiti remover



DESCRIPTION

Powerful graffiti remover. It is specially designed to remove rapidly any kind of paint or varnish (even epoxy-based) from any surface such as walls, marbles, concrete, metals, ceramic tiles, etc.

APPLICATIONS

Suitable for almost any surface. It is used for cleaning graffiti from buildings, monuments, etc., removing gel-coat during maintenance of boats, for renovating old wooden furniture, as well as at car paint and body repair shops, machine shops, etc.

PACKAGING	ITEMS/BOX	ITEMS/PAL.
1lt plastic container	14	504
5lt plastic container		128
20lt plastic container		39

CONSUMPTION

Approximately 1lt / 4-5m².

P50

Powerful industrial cleaner



DESCRIPTION

Powerful concentrated cleaner, for industrial areas and heavy machinery. Biodegradable by more than 90%.

APPLICATIONS

Used for cleaning fat, grease, oil and soil residues from surfaces such as concrete, ceramic tiles, epoxy floors, metallic surfaces, etc. It also removes tar and asphalt residues from trucks, machinery and tanks, it efficiently cleans earthmoving machinery, while it can also be used for car washing.

PACKAGING	ITEMS/BOX	ITEMS/PAL.
1lt plastic container	14	504
5lt plastic container		128
20lt plastic container		39

CONSUMPTION

Approximately 1lt / 5-6m².

P60

Powerful concentrated acidic cleaner



DESCRIPTION

Concentrated mixture of powerful acids and corrosion inhibitors, ideal for eliminating rust, limescale, any kind of oxidation, etc. The presence of corrosion inhibitors in its formula, allows to be used in every situation, except from aluminum alloys. After application rinse with plenty of water. No neutralization is needed.

APPLICATIONS

Used in serpentine with electrical resistance as it doesn't generate electrostatic charges and there's no fear of a short circuit. In the thermo hydraulic sector it is used for heating installations, cooling towers, heat exchangers, cooling circuits, etc. In the building sector it cleans cement residues on barrel-trucks, pumps, ceramic tiles, etc. In naval sector against the biofouling from the submerged part of the ships. In the plastics industry for cleaning the stainless steel molds. Also used in the glass industry, marble, granite and ceramics industry.

PACKAGING	ITEMS/BOX	ITEMS/PAL.
1lt plastic container	14	504
5lt plastic container		128
20lt plastic container		39

CONSUMPTION

Approximately 1lt / 12-15m².



CERTIFICATE

Certificate no. 16851



FINOBETON SA
16, PYTHAGORA Str.
GR-731 34 CHANIA, CRETE, GREECE

QS ZÜRICH AG certifies that the management system of the above mentioned company has been assessed and meets the requirements established by the following rules:

ISO 9001: 2015

The management system includes:

**PRODUCTION & DISTRIBUTION OF READY MIXED
CONCRETE & ASPHALT MIX. DESIGN, PRODUCTION &
DISTRIBUTION OF READY MIXED DRY MORTARS.
PROCESSING & DISTRIBUTION OF MARBLE, NATURAL
STONE & GRANITE PRODUCTS.**

During the period of validity of this certificate, the management system of the company must always comply with the requirements of the certified standards.

For updated amendments within the scope of certification of the present certificate, please refer to info@qs.ch



Audit date: 07.01.2021
Date of issue: 08.01.2021
Expiration date: 06.01.2024
Subject to successful surveillance audit

QS ZÜRICH AG
P.O. Box 5335
CH-8050 Zürich



- Products should be used by qualified technicians only.
- Users of **FINOMIX** products should consult the products' properties at all time.
- Recommendations on the application and intended use of the **FINOMIX** range are based on the company's expertise provided that the products are stored, used and applied according to the company's recommendation under normal conditions.
- The displayed consumptions are the result of measurements performed under real conditions, however they should be treated as indicative only.
- Rendering of colours in the charts is only indicative.



One step forward





FINOMIX[®]

DRY MORTARS

FINOBETON S.A. Head Office

16 Pithagora Str.
73134 Chania, Crete, Greece
tel. +3028210 27000, fax +3028210 27005

Chania Distribution Center

Chordaki, Chania, Greece
tel. +3028210 63936

Herakleion Distribution Center

150 Irinis & Filias Ave.
Malades Industrial Park
Herakleion, Greece
tel. +302810 545580, fax +302810 545581

Athens Distribution Center

40, 28th Oktovriou Str.
18233 Ag. I. Rentis, Athens, Greece
tel. +30210 4915140, fax +30210 4915141

info@finomix.gr



www.finomix.gr

